

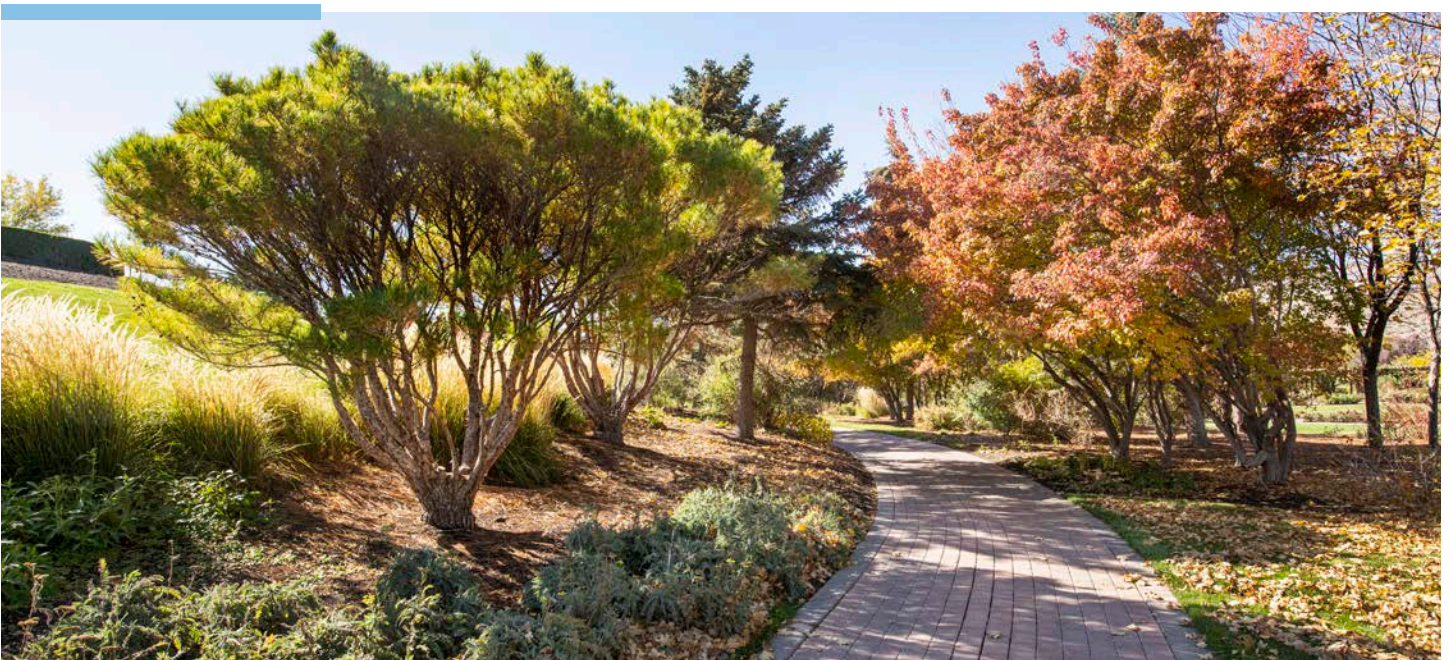


A Van Daele Homes
Community at Daybreak

Life, now within walking distance of your new home.

EASY ACCESS LIVING WHERE EVERYTHING COMES TOGETHER

At the intersection of comfort and convenience you'll find Axis at North Station, a community of stylish, modern townhomes that fit your lifestyle and enhance every aspect of life. Designed to capitalize on endless picturesque surroundings and within easy access to what you want and need, everything comes together here. And Van Daele Homes makes the entire experience effortless with beautiful features and an attention to detail that results in a truly amazing place to live—emphasis on the living part.





Daybreak's newest community has everything, **except you.**

Located in Daybreak's North Station district, Axis offers one of the most valued amenities of all: access. That means absolutely everything is close at hand. Art and music. Commerce and cuisine. Nature and culture. Paths and public transportation. The only thing that's missing is you.

Why Choose Van Daele Homes?

ANSWERING TO YOU



We are a family-owned company that builds for your street, not Wall Street. Unlike most others, we are not a publicly owned conglomerate answering to stockholders. You are our stockholder. We answer to you.



Our Four Point Pledge to You.

1. *Van Daele Sales Philosophy*

Van Daele Sales Counselors are here to counsel you and to help you in any way they can. They are seasoned professionals who are committed to looking out for your best interests. They will answer all your questions, assist you with all of your needs and make sure you feel good about your new home. Our Sales Counselors consistently score 93% or higher on customer satisfaction surveys.

2. *Van Daele Lender Partnering*

We include the services of loanDepot® as our "lender partner" because of the proven service and value they bring to our homebuyers. It's no wonder that loanDepot® has received the distinguished Eliant certified customer satisfaction designation.

3. *Van Daele Personal Touch*

We involve you in your home buying process via regular construction updates along with private hard hat tours of your new home. This also includes additional walkthroughs prior to your home's completion.

4. *Van Daele Value*

We offer the best in residential real estate construction and construction services, construction management and planned community developments. Our Van Daele locations, features and efforts to achieve customer satisfaction can't be beat! Generations of smart home shoppers and even our friendly competitors know and respect our Van Daele team of professionals.



RESIDENCE

1A

LIVING SPACE

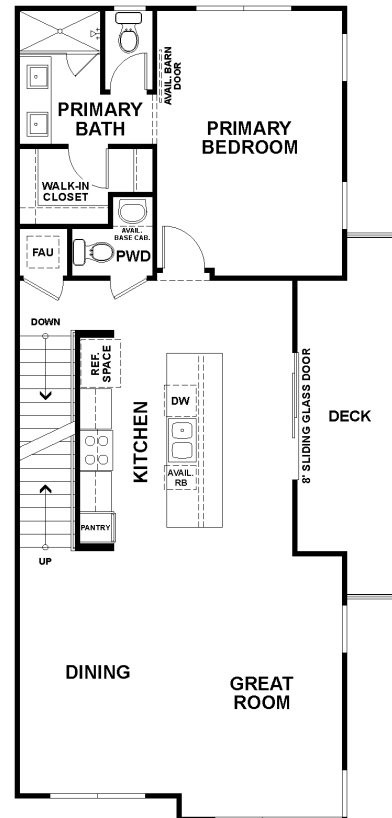
- 1,613 – 2,285 sq. ft.
- Two-Story
- 3-4 Bedrooms | 2.5-3.5 Baths
- Great Room
- Dining Area
- Laundry Room
- Second Floor Deck
- Roof Deck
- 2-Car Garage

AVAILABLE

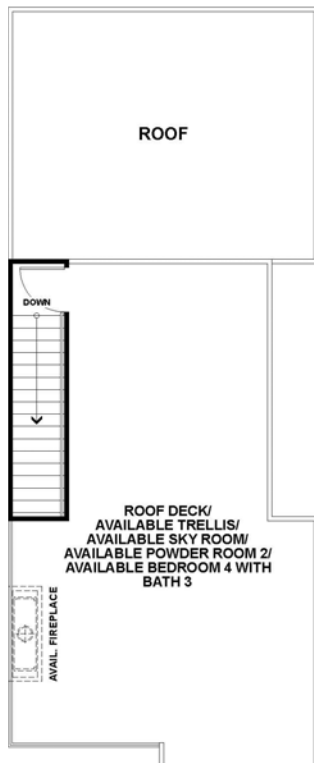
- Barn Door at Primary Bath
- Sky Room
- Sky Room with Powder 2
- Fireplace at Roof Deck
- Covered Deck with Trellis at Roof Deck
- Bedroom 4 with Bath 3 at Sky Room (1B Only)



FIRST FLOOR



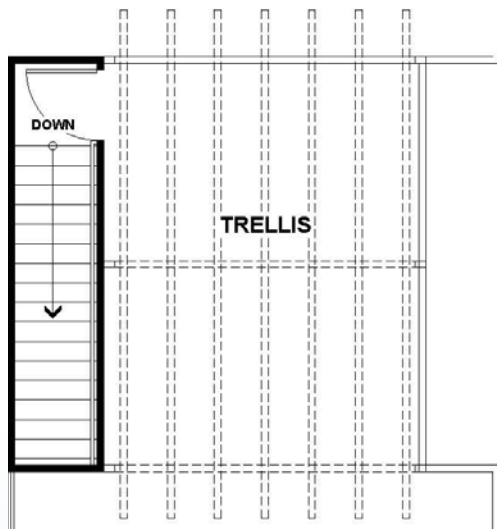
SECOND FLOOR



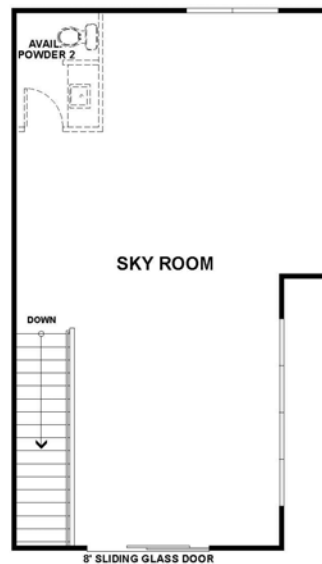
THIRD FLOOR



THIRD FLOOR OPTION:
SKY ROOM WITH BEDROOM SUITE AND BATH



THIRD FLOOR OPTION:
COVERED DECK WITH TRELLIS AT ROOF DECK



THIRD FLOOR OPTION:
SKY ROOM WITH POWDER BATH

RESIDENCE

2D

LIVING SPACE

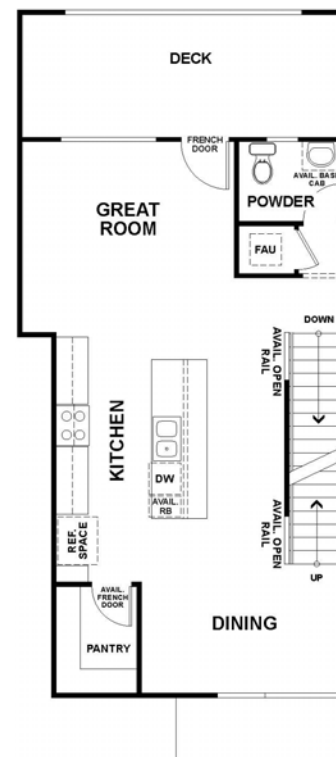
- 1,760–2,138 sq. ft.
- Three-Story
- 3 Bedrooms | 3.5 – 3 Full & 2 Half Baths
- Great Room
- Dining Room
- Laundry Room
- Second Floor Deck
- Roof Deck

AVAILABLE

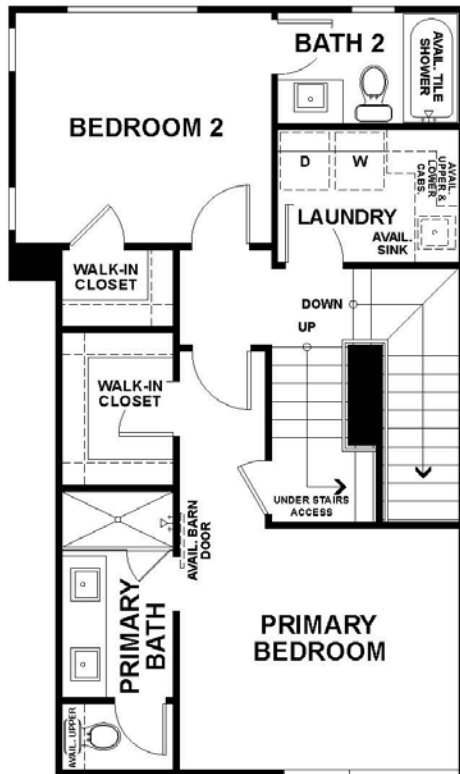
- Open Railing Options
- Barn Door at Primary Bedroom
- Sky Room with Powder
- Fireplace at Roof Deck
- Covered Deck with Trellis at Roof Deck



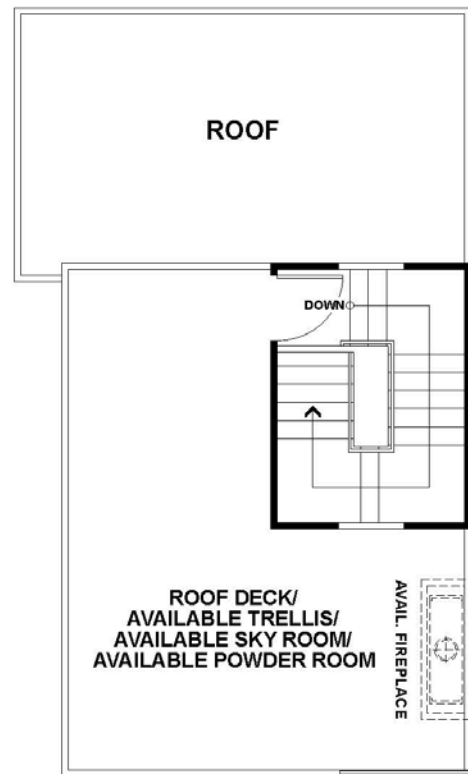
FIRST FLOOR



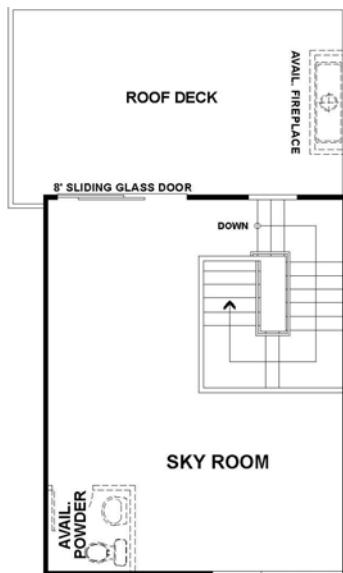
SECOND FLOOR



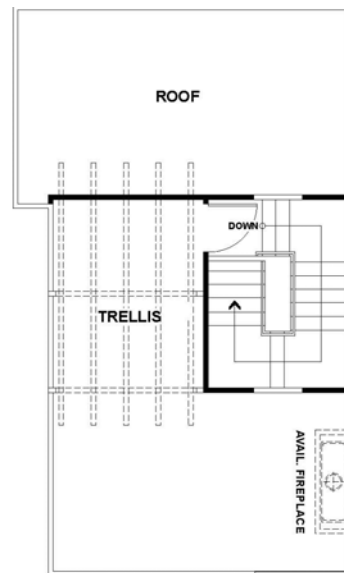
THIRD FLOOR



FOURTH FLOOR



FOURTH FLOOR OPTION:
SKY ROOM WITH POWDER



FOURTH FLOOR OPTION:
COVERED DECK WITH TRELLIS AT ROOF DECK

---Denotes available item in most instances. Windows, wall sizes and locations may vary per elevation. In the instance of continuing improvement Van Daele Homes reserves the right to make modifications to floor-plans and exterior elevations without notice or obligation. Square footage are exterior, approximate and vary by elevation. All artwork, renderings and floor-plans are artist's conception and not to scale. See Sale Counselor for details.

RESIDENCE

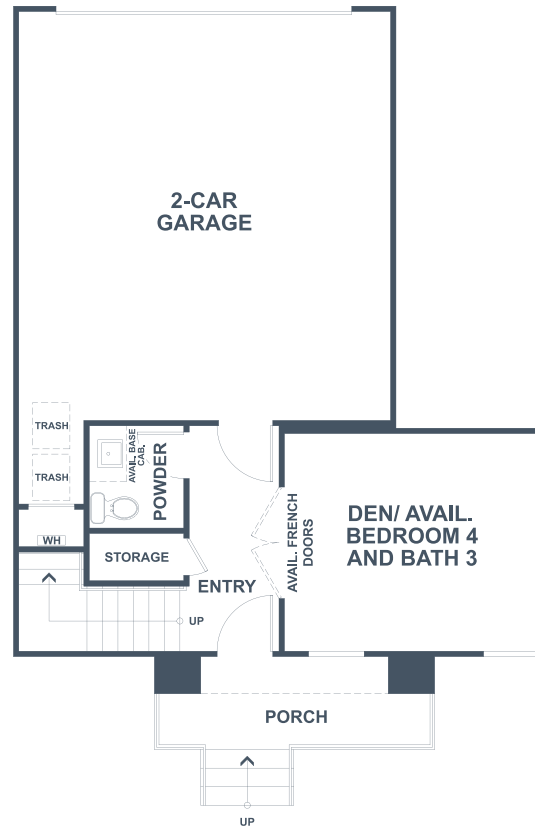
3C

LIVING SPACE

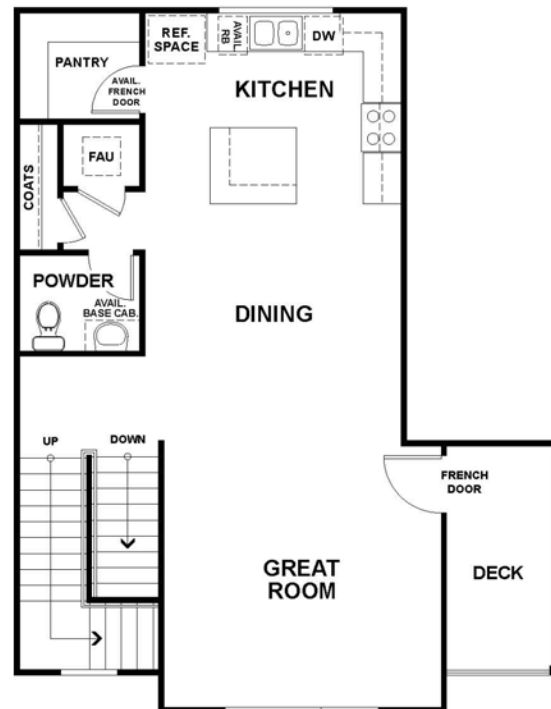
- 1,924–2,433 sq. ft.
- Three-Story
- 3–4 Bedrooms | 2 Full & 2 Half – 3.5 Baths
- First Floor Den
- Great Room
- Dining Room
- Second Floor Deck
- Roof Deck
- 2-Car Garage

AVAILABLE

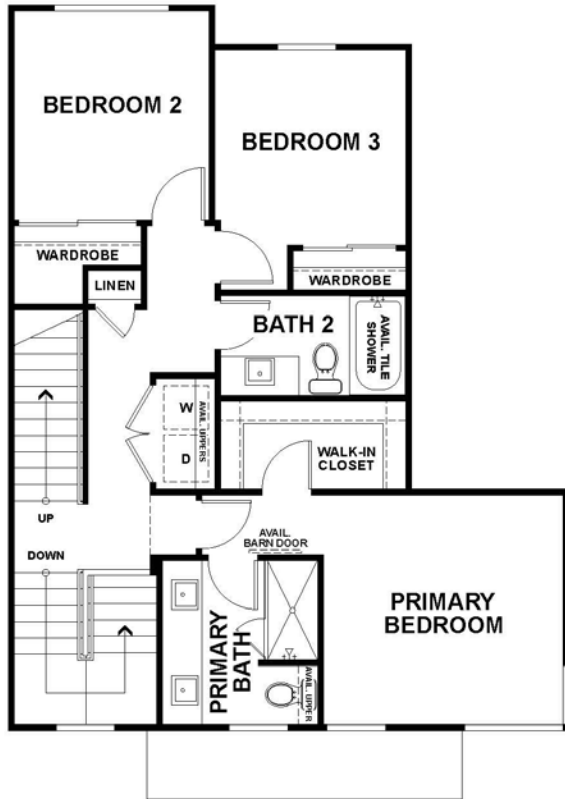
- Barn Door at Primary Bedroom
- Barn Door at Bedroom 3
- French Doors at Den
- Bedroom 4/Bath 3 ILO Den & Powder Bath
- Sky Room
- Fireplace at Roof Deck
- Covered Deck with Trellis at Roof Deck
- Sky Room with Powder Bath & Linen



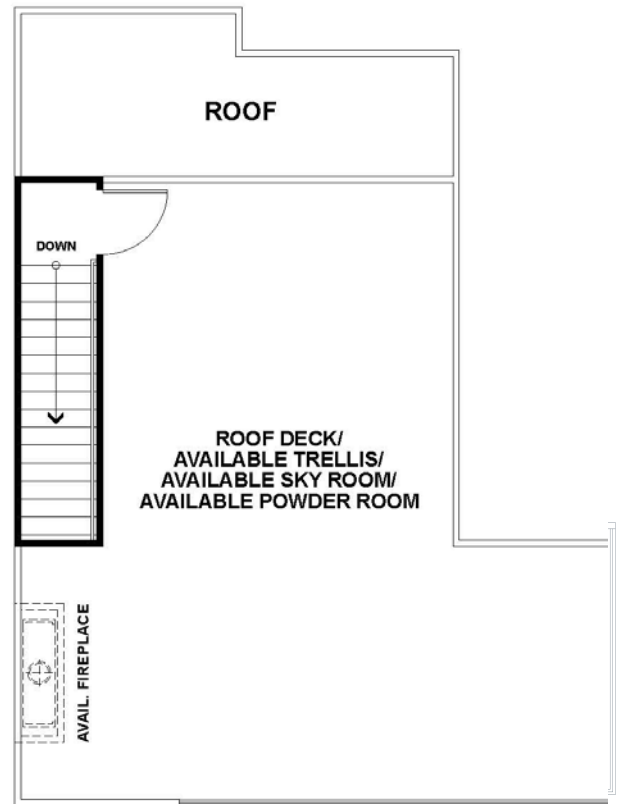
FIRST FLOOR



SECOND FLOOR



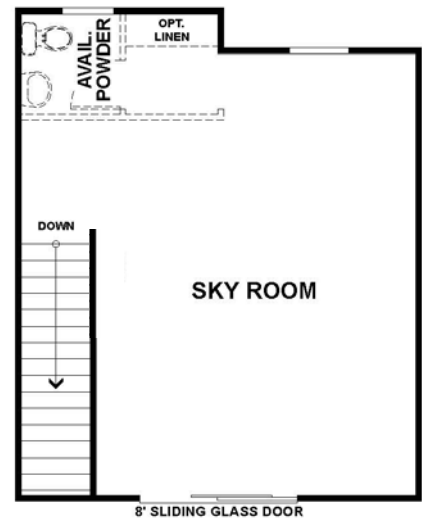
THIRD FLOOR



FOURTH FLOOR

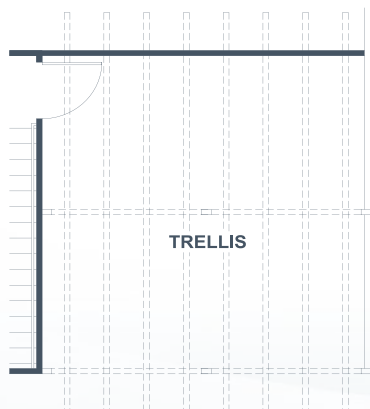


FIRST FLOOR OPTION: BEDROOM 4
AND BATH 3 IN LIEU OF DEN



FOURTH FLOOR OPTION:
SKY ROOM/SKY ROOM WITH POWDER & LINEN

FOURTH FLOOR OPTION:
COVERED DECK WITH
TRELLIS AT ROOF DECK



---Denotes available item in most instances. Windows, wall sizes and locations may vary per elevation. In the instance of continuing improvement Van Daele Homes reserves the right to make modifications to floor-plans and exterior elevations without notice or obligation. Square footage are exterior, approximate and vary by elevation. All artwork, renderings and floor-plans are artist's conception and not to scale. See Sale Counselor for details.



6-PLEX BUILDING ELEVATION



9-PLEX BUILDING ELEVATION



AERIAL RENDERING



LOCATION AMENITIES



All artwork, renderings and floor-plans are artist's conception and not to scale. See Sale Counselor for details.





Features and Amenities

AUTHENTIC EXTERIOR CHARM

- Roll up garage doors with wi-fi opener and 2 remotes
- Distinctive 8' fiberglass Belleville® entry doors with vertical lite side glass and Schlage® hardware

DRAMATIC INTERIOR APPOINTMENTS

- Stunning modern staircase with painted wood handrails and square balusters (per plan)
- All walls finished with wholly smooth drywall texture and square corners
- Masonite two-panel doors with chrome knobs
- Luxury Vinyl Plank flooring in the entry and wet areas
- Convenient interior laundry room
- Stylish quartz countertops
- Shaker style maple cabinetry in a choice of 3 stained finishes with 6" satin nickel bar pull hardware throughout
- Decora® light switches
- USB outlet at kitchen and master bedroom

GOURMET KITCHENS

- Electric Whirlpool® stainless steel appliance package including: 30" four-burner free-standing range, microwave hood and dishwasher
- Single-bowl undermount stainless steel sink with Moen® pull-down faucet and garbage disposal
- LED lighting
- Refrigerator area pre-plumbed for an ice maker

THOUGHTFULLY DETAILED PRIMARY SUITES



More Features and Amenities

- Generous walk-in closets
- Stylish quartz countertops with square edge and 4" backsplash
- Rectangular undermount sinks with Moen® faucets
- Large vanity mirrors and decorator-selected lighting fixtures
- Spacious three-wall fiberglass subway tile shower with seat

EFFICIENT BY DESIGN®

- High-efficiency tankless water heater
- High-efficiency toilets
- Dual-glazed Low-E windows
- Exterior wall and attic area insulation
- Radiant barrier for efficient temperature control
- Central air with air conditioner
- Drywalled & taped garage
- Ecobee smart thermostat



The Van Daele Homes Story

WE DON'T JUST BUILD HOMES—WE BUILD RELATIONSHIPS

Home is where memories are created, lives shared and moments celebrated, and where the honor of crafting your home is something we value and don't take for granted. At Van Daele Homes, our experienced team of employees, artisans and consultants takes building quality, handcrafted homes very seriously, and we are intimately involved in your home's design and construction every step of the way.

At Van Daele Homes, we don't just build homes. We build relationships. Building homes for us isn't pulling a design off the shelf and assuming it works for you and your family – it's designing and constructing homes with heart, with a meticulous attention to detail and with the personal care and touches you and today's homebuyers need and deserve. We also offer you a high level of customization and participation in the construction process so we can help build you a home that works with the way you live, not the way we think you want to live.

We are certain you will find our homebuyer experience unparalleled. From the moment we meet until many years beyond your move-in, our Van Daele Homes team is by your side – communicating, updating and educating you on the home buying, construction and home warranty processes.

We promise
you'll feel the
Van Daele
difference. It's
a feeling of
comfort—*like*
coming home.

WELCOME TO THE FAMILY OF VAN DAELE HOMES.



**Van Daele Homes
Presale Center**

9746 S. 500 West, #7
Sandy, UT 84070

vandaele.com

(801) 520-8140

SUMMER HOURS

10AM – 6PM, TUE – SAT | 12PM – 6PM, WED

WINTER HOURS

10AM – 5PM, TUE – SAT | 12PM – 5PM, WED



Pricing, terms and features are subject to change without notice. Renderings are artist's conceptions. Van Daele and Van Daele Homes are registered trademarks of Van Daele Development Corporation. Square footages are based on approximate dimensions of the exterior of the homes. Models used do not reflect any racial preference. Homes pictured do not represent actual homesites.

