



LUMIN

AT THE RESORT



LIVE IN THE NOW

Discover a place that's welcoming, fresh and modern. This is Lumin, a new neighborhood that's more than a reflection of you – it's a place to tread your own path. Where you'll have your choice of brand new charming detached bungalows or single-level flats, each filled with spaces that inspire and all situated within The Resort, Rancho Cucamonga's exciting new master-planned community. Head to the Club on 6th for poolside relaxation. Take a stroll and find yourself amid shops, restaurants and great conversation. At Lumin, everything is just how you want it to be, and it all starts with you.

WHY VAN DAELE?

Van Daele Homes is a family-owned company that builds for YOUR Street, not Wall Street. Unlike most others, we are not a publicly owned conglomerate answering to stockholders. YOU are our stockholder. We answer to YOU. This is just one of the many reasons the Building Industry Association of Southern California has honored us as BUILDER OF THE YEAR.

OUR FOUR POINT PLEDGE TO YOU

1

OUR SALES PHILOSOPHY

Van Daele Sales Counselors are here to counsel you and to help you in any way they can. They are seasoned professionals who are committed to looking out for your best interests. They will answer all your questions, assist you with all of your needs and make sure you'll feel good about your new home. Our Sales Counselors consistently score 93% or higher on customer satisfaction surveys.

2

YOUR LOAN

We include the services of loanDepot as our "lender partner." They are our "lender partner" because of the proven service and value they bring to our homebuyers. It's no wonder that loanDepot has received the distinguished Eliant Certified customer satisfaction designation.

3

YOU'RE INCLUDED

We get you excited about your new home purchase right from the start. We involve you in the process via regular construction updates from both our sales and construction teams and also provide you a private hard hat tour of your new home as well as two additional walk-throughs prior to your home's completion. We want you to know your home inside and out and understand the intricate details of its quality construction, safety, technology and energy-efficient features.

4

VAN DAELE VALUE

We offer the best there is in location, design, quality, features, customer satisfaction and price. Generations of smart home shoppers (there are more than 15,000 Van Daele homeowners) and even our friendly competitors know and respect Van Daele.

RESIDENCE 2AR

LIVING SPACE

Approximately 1,538 Sq. Ft.*

Two-Story

4 Bedrooms | 3 Baths

Great Room | Dining Room

Private Rear Courtyard

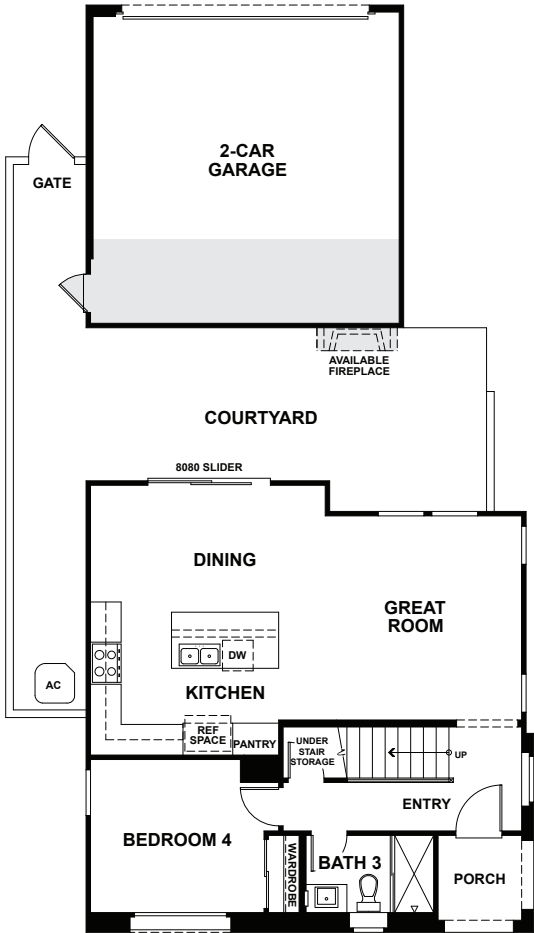
Detached Two-Car Garage

AVAILABLE

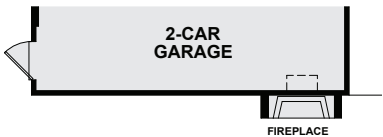
Outdoor Fireplace at Private
Rear Courtyard

Privacy Door at Master Bath

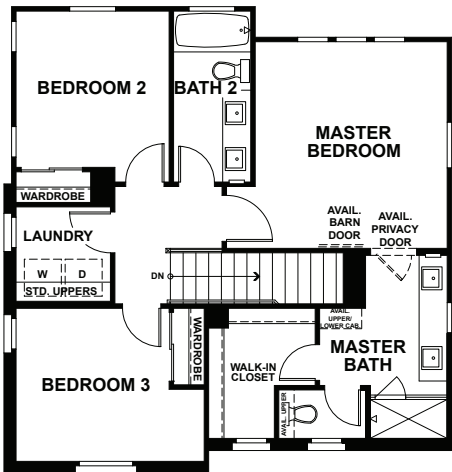
Barn Door at Master Bath



FIRST FLOOR



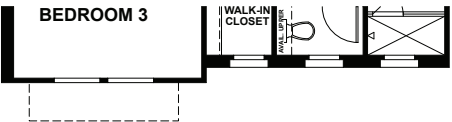
AVAILABLE OUTDOOR FIREPLACE



SECOND FLOOR



FIRST FLOOR ELEVATION B (2R)



SECOND FLOOR ELEVATION B (2R)



*Square footage is approximate, is based on exterior area and varies by elevation.

RESIDENCE 1AR

LIVING SPACE

Approximately 1,448 Sq. Ft.*

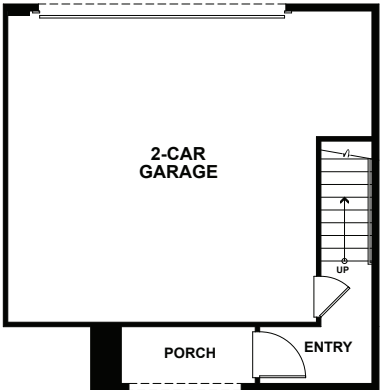
Carriage Unit / Single-Level Living

3 Bedrooms | 2.5 Baths

Great Room | Dining Room

Covered Second-Floor Deck

Attached Two-Car Garage



FIRST FLOOR

AVAILABLE

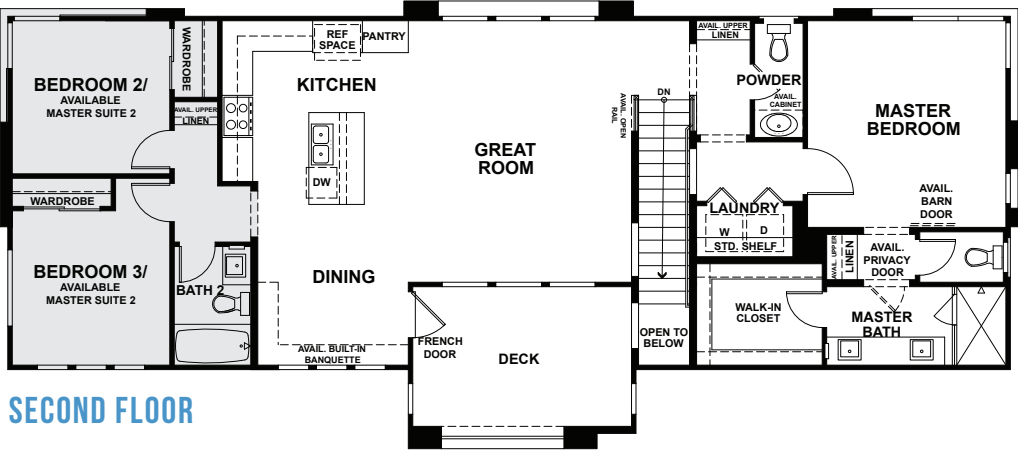
Master Suite 2 in Lieu of
Bedrooms 2 & 3 & Bath 2

Privacy Door at Master Bath

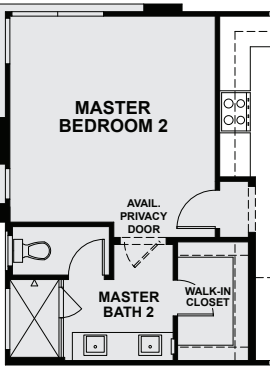
Barn Door at Master Bath

Open Rail at Second Floor

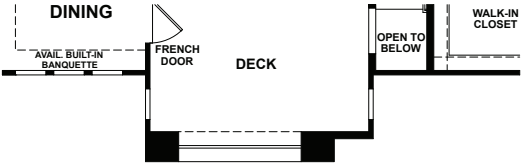
Built-In Banquette in
Dining Room



SECOND FLOOR



AVAILABLE MASTER SUITE 2 IN LIEU
OF BEDROOMS 2 AND 3 AND BATH 2



SECOND FLOOR ELEVATION B (1R)



*Square footage is approximate, is based on exterior area and varies by elevation.

RESIDENCE 3AR

LIVING SPACE

Approximately 1,528 – 1,934 Sq. Ft.*

Two-Story

3 Bedrooms + Den – 4 Bedrooms

2.5 – 4 Baths

Great Room | Dining Room | Den

Private Rear Courtyard

Detached Two-Car Garage

AVAILABLE

Outdoor Fireplace at Private
Rear Courtyard

Bedroom 4 & Bath 3 in Lieu
of Den & Powder Bath

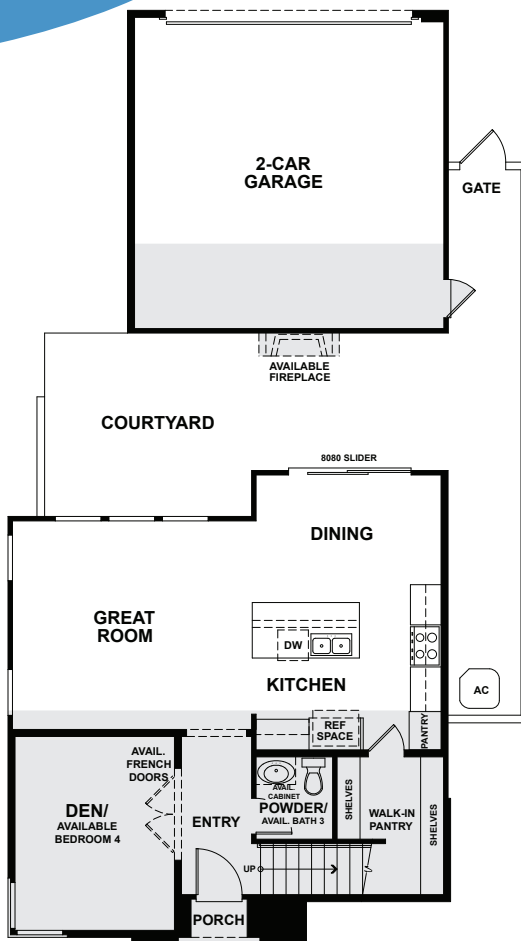
Third-Floor Bonus Room
with Powder 2 (Modifies
Second-Floor Laundry)

Bath 4 at Available Third-Floor Bonus
Room

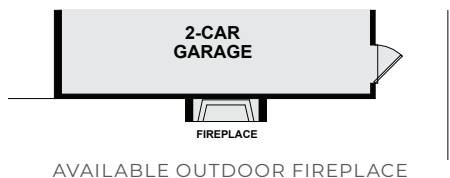
French Doors at Den

Privacy Door at Master Bath

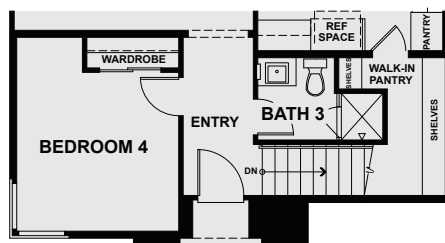
Barn Door at Master Bath



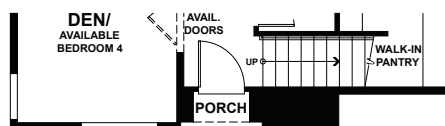
FIRST FLOOR



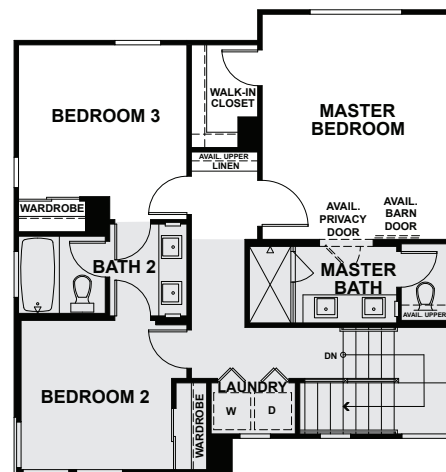
AVAILABLE OUTDOOR FIREPLACE



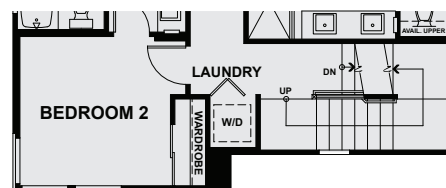
AVAILABLE BEDROOM 4 AND BATH 3
IN LIEU OF DEN AND POWDER BATH



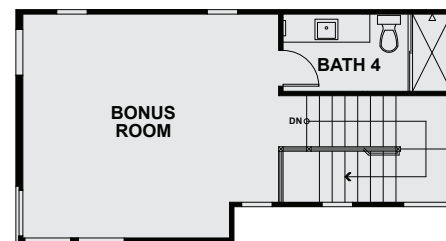
FIRST FLOOR ELEVATION B (3R)



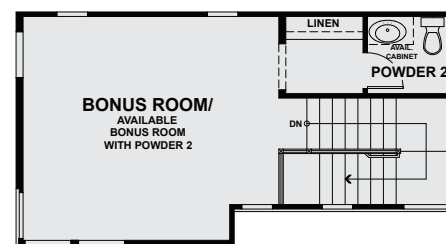
SECOND FLOOR



AVAILABLE THIRD-FLOOR ACCESS WITH
MODIFIED SECOND FLOOR LAUNDRY
(APPLIES TO ALL THIRD-FLOOR OPTIONS)



AVAILABLE THIRD-FLOOR BATH 4
AT AVAILABLE BONUS ROOM



AVAILABLE THIRD-FLOOR
BONUS ROOM WITH POWDER 2
AND BATH 3



SECOND FLOOR ELEVATION B (3R)

*Square footages are approximate, are based on exterior area and vary by elevation.



LUMIN ELEVATIONS



ELEVATION A



ELEVATION A (AERIAL VIEW)

Van Daele Homes reserves the right to make changes in features, designs and/or prices without notice. Specifics may be different from home to home. Please verify features in your favorite plan with your Sales Counselors.

LUMIN ELEVATIONS



ELEVATION B



ELEVATION B (AERIAL VIEW)

Van Daele Homes reserves the right to make changes in features, designs and/or prices without notice. Specifics may be different from home to home.
Please verify features in your favorite plan with your Sales Counselors.

FEATURES AND AMENITIES

AUTHENTIC EXTERIOR CHARM

Decorative concrete tile roofs

Durable steel roll-up garage doors and two automatic door openers

Distinctive 8' entry doors with Schlage® hardware

DRAMATIC INTERIOR APPOINTMENTS

Stunning staircase with painted wood handrails and square balusters (per residence)

All walls finished with orange peel drywall texture and rounded bullnose corners

Two-panel Carrara-style doors with upgraded satin nickel hardware

12" x 12" ceramic tile flooring at entry and all wet areas

Stylish quartz countertops

Elegant Shaker-style maple cabinetry in three stained finishes with satin nickel knobs and concealed hinges

Decora® light switches

Pre-wired for Cat6 and cable

GOURMET KITCHENS

Stylish quartz countertops with 6" backsplash

Elegant Shaker-style maple cabinetry in three stained finishes with satin nickel knobs and concealed hinges

Whirlpool® stainless steel appliances, including the following:

- 30" four-burner range and microwave hood
- Heavy-duty dishwasher with one-hour wash cycle

Single-bowl undermount stainless steel sink with Moen® pull-down faucet

Refrigerator area pre-plumbed for an ice maker

Decorative stool and apron on interior windows (per plan)

LED lighting

THOUGHTFULLY DETAILED MASTER SUITES

Elegant Shaker-style maple cabinetry in three stained finishes with satin nickel knobs and concealed hinges

Stylish quartz countertops

White PROFLO® sinks with Moen® faucets

Generous walk-in closet

Large vanity mirrors and decorator-selected lighting fixtures

EFFICIENT BY DESIGN®

Conduit for future electric car charger

Tankless water heater

Dual-glazed Low-E windows

Exterior wall and attic area insulation for efficient temperature control

GoControl® Z-Wave® battery-powered thermostat

ENERGY STAR® multi-cycle dishwasher

Elan® smart home technology

LED lighting throughout

QuiteCool® whole house fan (Residences 2 & 3)

125-cu.-ft. garage storage racks

Many home customization options are available through the Design Center; please refer to floor plan descriptions and illustrations. Please see your Sales Counselors for more details.

OUR STORY

Home is where memories are created, lives shared and moments celebrated, and where the honor of crafting your home is something we value and don't take for granted. At Van Daele Homes, our experienced team of employees, artisans and consultants takes building quality, handcrafted homes very seriously, and we are intimately involved in your home's design and construction every step of the way.

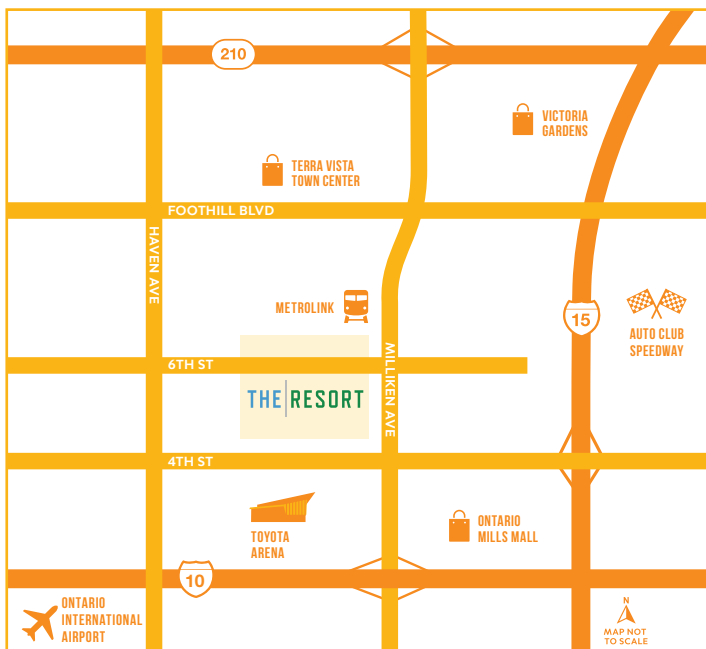
At Van Daele Homes, we don't just build homes. We build relationships. Building homes for us isn't pulling a design off the shelf and assuming it works for you and your family – it's designing and constructing homes with heart, with a meticulous attention to detail and with the personal care and touches you and today's

homebuyers need and deserve. We also offer you a high level of customization and participation in the construction process so we can help build you a home that works with the way you live, not the way we think you want to live.

We are certain you will find our homebuyer experience unparalleled. From the moment we meet until many years beyond your move-in, our Van Daele Homes team is by your side – communicating, updating and educating you on the home buying, construction and home warranty processes.

We promise you'll feel the Van Daele difference. It's a feeling of comfort – like coming home.

WELCOME TO THE FAMILY OF VAN DAELE HOMES.



11029 Aspire Drive
Rancho Cucamonga, CA 91730
(951) 221-5828

Summer Hours:

10am – 6pm Daily | 12pm – 6pm, Wed. & Sun.

Winter Hours:

10am – 5pm Daily | 12pm – 5pm, Wed. & Sun.

VANDAELE.COM  

