



THE BUNGALOWS

AT TERRA VISTA





Welcoming, fresh and modern, The Bungalows at Terra Vista invites you to tread your own path and discover a place that's a reflection of you. It's charming detached bungalows and single-level flats and spaces that inspire. Where you'll find your center poolside at the clubhouse. Take the short walk to meet up with new and longtime friends for shopping and lunch at a nearby bistro. It's making time to get out on the trails or to take in the sunset from nearby Mt. Baldy. There's a sense of connection to the world around you, and life here just feels more vibrant.



fresh start



WHY VAN DAELE?

Van Daele Homes is a family-owned company that builds for YOUR Street, not Wall Street. Unlike most others, we are not a publicly owned conglomerate answering to stockholders. YOU are our stockholder. We answer to YOU. This is just one of the many reasons the Building Industry Association of Southern California has honored us as BUILDER OF THE YEAR.

OUR FOUR POINT PLEDGE TO YOU

1

OUR SALES PHILOSOPHY

Van Daele sales counselors are here to counsel you and to help you in any way they can. They are seasoned professionals who are committed to looking out for your best interests. They will answer all your questions, assist you with all your needs and make sure you'll feel good about your new home. Our sales counselors consistently score 93% or higher on customer satisfaction surveys.

2

YOUR LOAN

We include the services of loanDepot as our "lender partner." They are our "lender partner" because of the proven service and value they bring to our homebuyers. It's no wonder that loanDepot has received the distinguished Eliant Certified customer satisfaction designation.

3

YOU'RE INCLUDED

We get you excited about your new home purchase right from the start. We involve you in the process via regular construction updates from both our sales and construction teams and also provide you a private hard hat tour of your new home as well as two additional walk-throughs prior to your home's completion. We want you to know your home inside and out and understand the intricate details of its quality construction, safety, technology and energy-efficient features.

4

VAN DAELE VALUE

We offer the best there is in location, design, quality, features, customer satisfaction and price. Generations of smart home shoppers (there are more than 15,000 Van Daele homeowners) and even our friendly competitors know and respect Van Daele.

RESIDENCE

1

LIVING SPACE

Approximately 1,448 Sq. Ft.*

Two-Story / Single-Level Living
2 - 3 Bedrooms | 2 - 2.5 Baths
Great Room | Dining Room
Covered Second-Floor Deck
Two-Car Garage

AVAILABLE

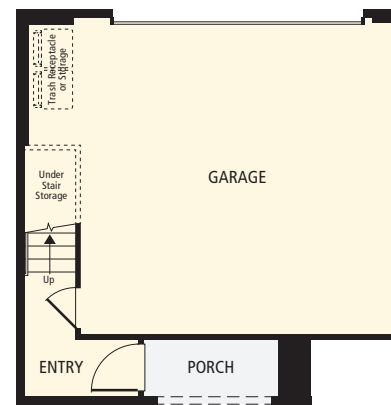
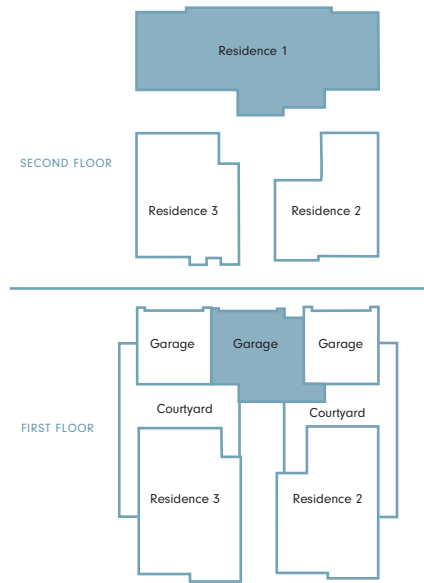
Master Bedroom 2
in Lieu of Bedrooms 2 & 3

Privacy Door at Master Bath

Barn Door at Master Bath

Open Rail at Stairs

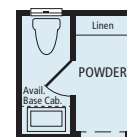
Banquette in Dining Room



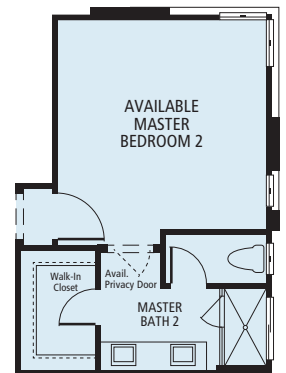
FIRST FLOOR



SECOND FLOOR



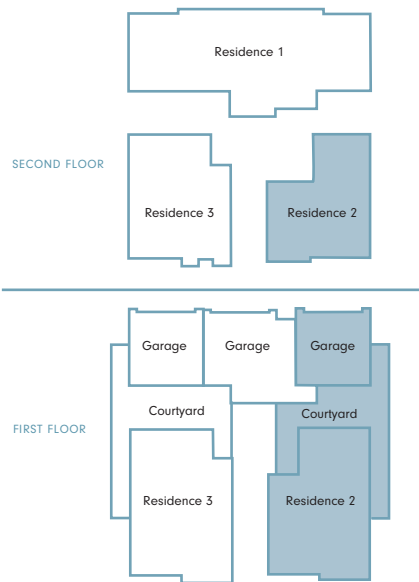
AVAILABLE POWDER FOR
MASTER BEDROOM 2



AVAILABLE
MASTER BEDROOM 2

*Square footages are approximate, based on exterior area and vary by elevation.



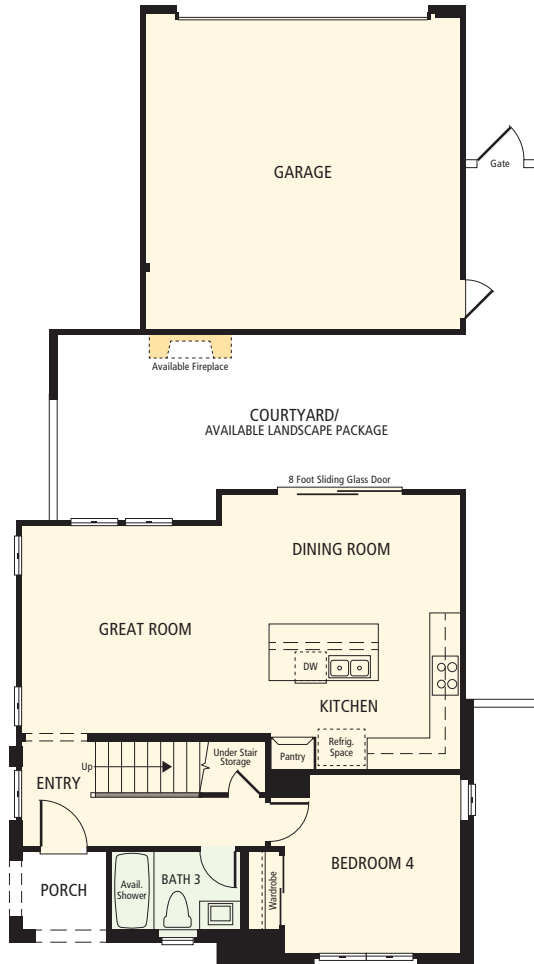


Available Fireplace

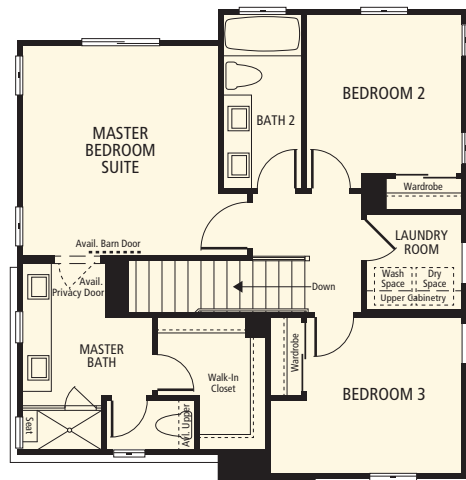
AVAILABLE OUTDOOR FIREPLACE



AVAILABLE SHOWER
AT BATH 3 IN LIEU
OF TUB/SHOWER
COMBO



FIRST FLOOR



SECOND FLOOR

RESIDENCE 2

LIVING SPACE

Approximately 1,538 Sq. Ft.*

Two-Story
4 Bedrooms | 3 Baths
Great Room | Dining Room
Private Rear Courtyard
Two-Car Detached Garage

AVAILABLE

Outdoor Fireplace at Private
Rear Courtyard

Courtyard Landscape Package

Stall Shower at Bath 3

Privacy Door at Master Bath

Barn Door at Master Bath



*Square footages are approximate, based on exterior area and vary by elevation.

RESIDENCE 3

LIVING SPACE

Approximately 1,537 – 1,951 Sq. Ft.*

Two-Story

3 – 4 Bedrooms | 2.5 – 4 Baths
Great Room | Dining Room | Den
Private Rear Courtyard
Two-Car Detached Garage

AVAILABLE

Outdoor Fireplace at Courtyard

French Doors at Den

Bedroom 4 and Bath 3
in Lieu of Den

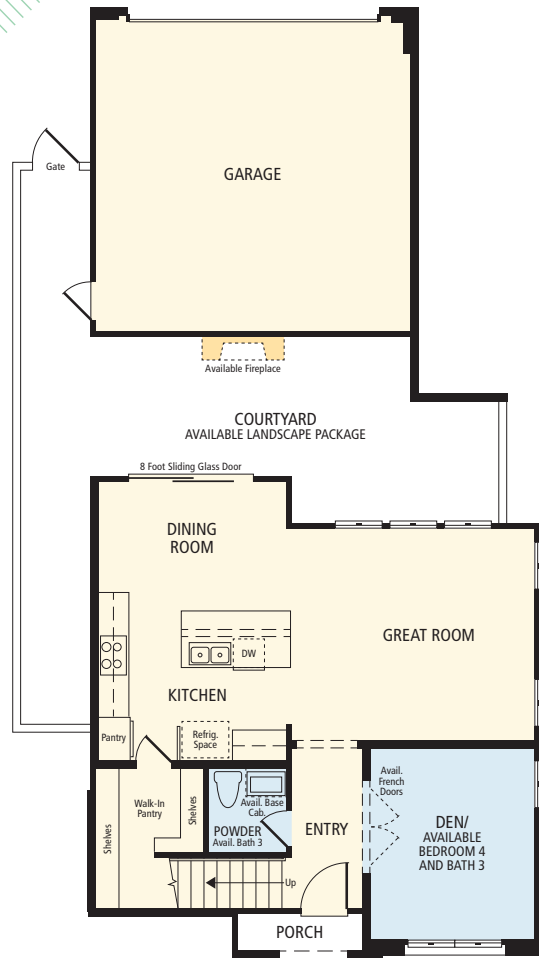
Third-Floor Bonus Room
with Powder 2

Bath 4 in Lieu of
Third-Floor Powder

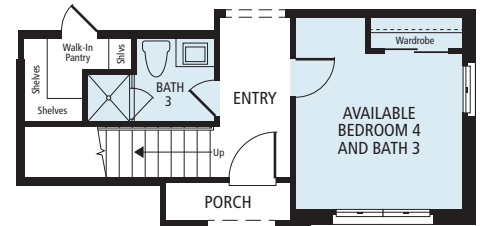
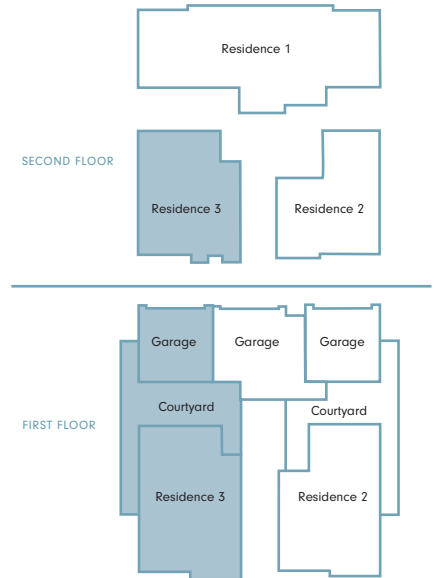
Privacy Door at Master Bath

Barn Door at Master Bath

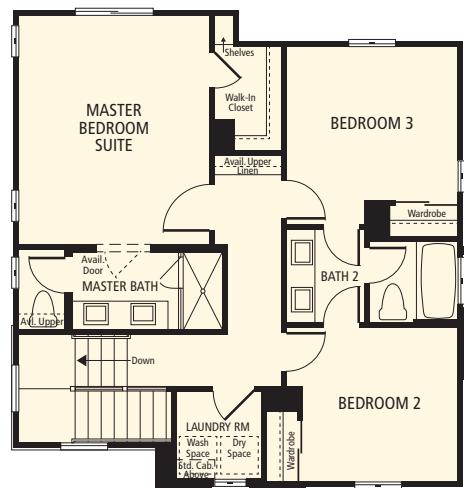
Courtyard Landscape Package



FIRST FLOOR



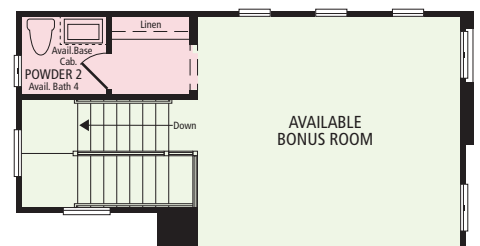
AVAILABLE BEDROOM 4 AND BATH 3
IN LIEU OF DEN



SECOND FLOOR



AVAILABLE BATH 4
IN LIEU OF POWDER 2



AVAILABLE THIRD-FLOOR BONUS ROOM
AND POWDER 2 (LAUNDRY IS STACKED
WITH THIRD-FLOOR OPTION)

*Square footages are approximate, based on exterior area and vary by elevation.

THE BUNGALOWS ELEVATIONS



FRONT VIEW



AERIAL VIEW



THE BUNGALOWS

FEATURES+AMENITIES



AUTHENTIC EXTERIOR CHARM

Architecturally designed, color-coordinated street scenes

Decorative concrete tile roofs

Concrete driveways and walkways

Durable sectional steel roll-up garage doors with R-9 vinyl insulation and an automatic door opener

Distinctive 8' entry doors with Schlage® hardware

DRAMATIC INTERIOR APPOINTMENTS

Soaring 9' ceilings on all floors

Stunning staircase with painted wood handrails and square balusters (per residence)

All walls finished with orange peel drywall texture and rounded bullnose corners

Raised-panel Roman-style doors with upgraded satin nickel hardware

12" x 12" ceramic tile flooring at entry and all wet areas

Convenient interior laundry room with overhead cabinetry or shelving (per residence)

Easy-care solid-surface countertops

Elegant stained Shaker-style soft maple cabinetry with brushed chrome knobs and concealed hinges

Decora® light switches

Pre-wired for Cat5 and cable

GOURMET KITCHENS

Granite countertops with 6" backsplash

Elegant white Shaker-style soft maple cabinetry with brushed chrome knobs and concealed hinges

Whirlpool® stainless steel appliances:

- 30" four-burner range and microwave hood
- Quiet wash dishwasher

Double-pressed stainless steel sink with Moen® pullout faucet

Recessed LED lighting

Refrigerator area pre-plumbed for an ice maker

THOUGHTFULLY DETAILED MASTER SUITES

Generous walk-in closet

Elegant stained Shaker-style soft maple cabinetry with brushed chrome knobs and concealed hinges

Easy-care solid-surface countertops

Dual china sinks with Moen® faucets

Large vanity mirrors and decorator-selected lighting fixtures

EFFICIENT BY DESIGN®

Van Daele Homes' Efficient By Design® is included in your new energy-efficient home because of the benefits it brings to you and the environment.

2kW solar included

Amazon home technology package

Tankless water heater

Dual-glazed Low-E windows

R-15 exterior wall insulation and R-38 insulation in attic areas for efficient temperature control

High-efficiency central air conditioning with set-back Wi-Fi thermostat

Economic gas forced-air heating

Whole house fan (per residence)

ENERGY STAR® multi-cycle dishwasher

Environmentally friendly engineered lumber products

Low-VOC interior wall and ceiling paint

Many home customization options are available through the Design Center; please refer to floor plan descriptions and illustrations. Please see your sales counselors for more details.

Van Daele Homes reserves the right to make changes in features, designs and/or prices without notice. Specifics may be different from home to home. Please verify features in your favorite plan with your sales counselors.

THE CLUBHOUSE



The Clubhouse is your place to meet up, hang out and be in the moment. Pick up the pace in the fitness center, grab a partner for a game of table tennis or simply lounge amid warm conversation and fresh open air. It's all right here.

- Resort-Style Pool & Spa
- Fitness Center
- Business Center
- Lounge
- Outdoor Lounge
- Barbecue Area
- Prep Kitchen
- Fire Pit

OUR STORY

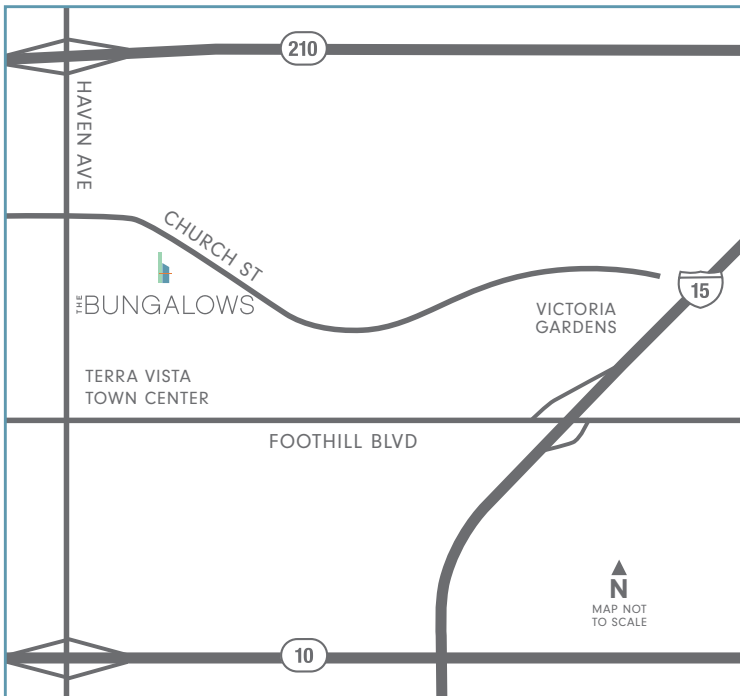
Home is where memories are created, lives shared and moments celebrated, and where the honor of crafting your home is something we value and don't take for granted. At Van Daele Homes, our experienced team of employees, artisans and consultants takes building quality, handcrafted homes very seriously, and we are intimately involved in your home's design and construction every step of the way.

At Van Daele Homes, we don't just build homes. We build relationships. Building homes for us isn't pulling a design off the shelf and assuming it works for you and your family - it's designing and constructing homes with heart, with a meticulous attention to detail and with the personal care and touches you and today's homebuyers need and deserve. We also offer you a high level of customization and participation in the construction process so we can help build you a home that works with the way you live, not the way we think you want to live.

We are certain you will find our homebuyer experience unparalleled. From the moment we meet until many years beyond your move-in, our Van Daele Homes team is by your side - communicating, updating and educating you on the home buying, construction and home warranty processes.

We promise you'll feel the Van Daele difference. It's a feeling of comfort - like coming home.

Welcome to the Family of Van Daele Homes.



10552 Cannon Drive
(Corner of Church St. & Haven Ave.)
Rancho Cucamonga, CA 91730
(951) 376-1595

Summer Hours:
10am - 6pm Daily | 12pm - 6pm, Wed. & Sun.

Winter Hours:
10am - 5pm Daily | 12pm - 5pm, Wed. & Sun.

VANDAELE.COM  



Activated and Supported by


Pricing, terms and features are subject to change without notice. Renderings are artist's conception. Van Daele is a registered trademark of Van Daele Development Corporation. Square footages are based on an approximate dimension of the exterior of the home. Models used do not reflect any racial preference. Homes pictured do not represent actual homesites. CA DRE license #00974168. 