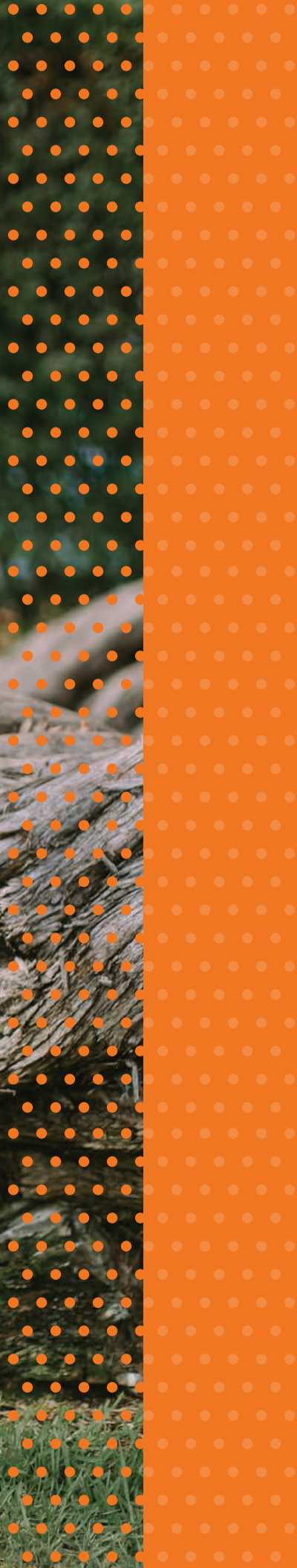


# SEVILLE







## The *Sweet Life* Is Here



Van Daele Homes is proud to introduce Seville, a gated new home neighborhood located in the beautiful city of Corona. These spacious single-family homes feature generous two-story floorplans with up to five bedrooms and approximately 3,225 square feet. Three sophisticated home designs showcase thoughtful and generous living spaces with oversized great rooms, beautiful gourmet kitchens and Van Daele's signature indoor/outdoor California Rooms that are perfect for extending daily life outdoors. Conveniently close to the 15 and 91 freeways and near abundant shopping and dining opportunities, outdoor recreation and top-rated schools, Seville is the home you have been waiting for.





# Why Van Daele?

Van Daele Homes is a family-owned company that builds for YOUR Street, not Wall Street. Unlike most others, we are not a publicly owned conglomerate answering to stockholders. YOU are our stockholder. We answer to YOU. This is just one of the many reasons the Building Industry Association of Southern California has honored us as BUILDER OF THE YEAR.

## OUR *FOUR POINT* PLEDGE TO YOU

---

### 01. Our Sales Philosophy

Van Daele Sales Counselors are here to counsel you and to help you in any way they can. They are seasoned professionals who are committed to looking out for your best interests. They will answer all your questions, assist you with all your needs, and they will make sure you'll feel good about your new home. Our Sales Counselors consistently score 93% or higher on customer satisfaction surveys.

### 02. Your Loan

We include the services of loanDepot as our "Lender Partner." They are our "Lender Partner" because of the proven service and value they bring to our homebuyers. It's no wonder that loanDepot has received the distinguished "Eliant Certified" customer satisfaction designation.

### 03. You're Included

We get you excited about your new home purchase right from the start. We involve you in the process via regular construction updates from both our sales and construction teams and also provide you a private 'hard-hat' tour of your new home as well as two additional walk throughs prior to your home's completion. We want you to know your home inside and out and understand the intricate details of its quality construction, safety, technology and energy-efficient features.

### 04. Van Daele Value

We offer the best there is in location, design, quality, features, customer satisfaction and price. Generations of smart home shoppers (there are more than 15,000 Van Daele homeowners) and even our friendly competitors know and respect Van Daele.





## RESIDENCE

# 1

### INTERIOR LIVING SPACE

Approximately 2,842 Sq. Ft.\*

### OUTDOOR LIVING SPACE

297 Sq. Ft.\*

Two-Story

4 - 5 Bedrooms

3½ - 4½ Baths

California Room

Great Room

Dining Room

Loft

Two-Car Garage

### AVAILABLE

Fireplace at California Room

Bedroom 5 with Bath 4 in lieu of Loft

Extended Kitchen Island

12' or 16' Sliding Glass Door  
at Great Room

1A SANTA BARBARA (MODEL)



1B SPANISH



1C ANDALUSIAN



Renderings are artist's conception. \*Square footages are approximate, based on exterior area and vary by elevation.



---Denotes available item in most instances. Windows, wall sizes and locations may vary per elevation and options selected. In the interest of continuing improvement, Van Daele Homes reserves the right to make modifications to floorplans and exterior elevations without notice or obligation. All artwork, renderings and floorplans are artist's conceptions and are not to scale. See Sales Counselors for details.





## RESIDENCE

# 2

### INTERIOR LIVING SPACE

Approximately 2,897 Sq. Ft.\*

### OUTDOOR LIVING SPACE

298 Sq. Ft.\*

Two-Story

5 Bedrooms

4½ Baths

California Room

Great Room

Dining Room

Loft

Two-Car Garage

### AVAILABLE

Fireplace at California Room

12' or 16' Sliding Glass Door  
at Kitchen

2A SANTA BARBARA



2B SPANISH

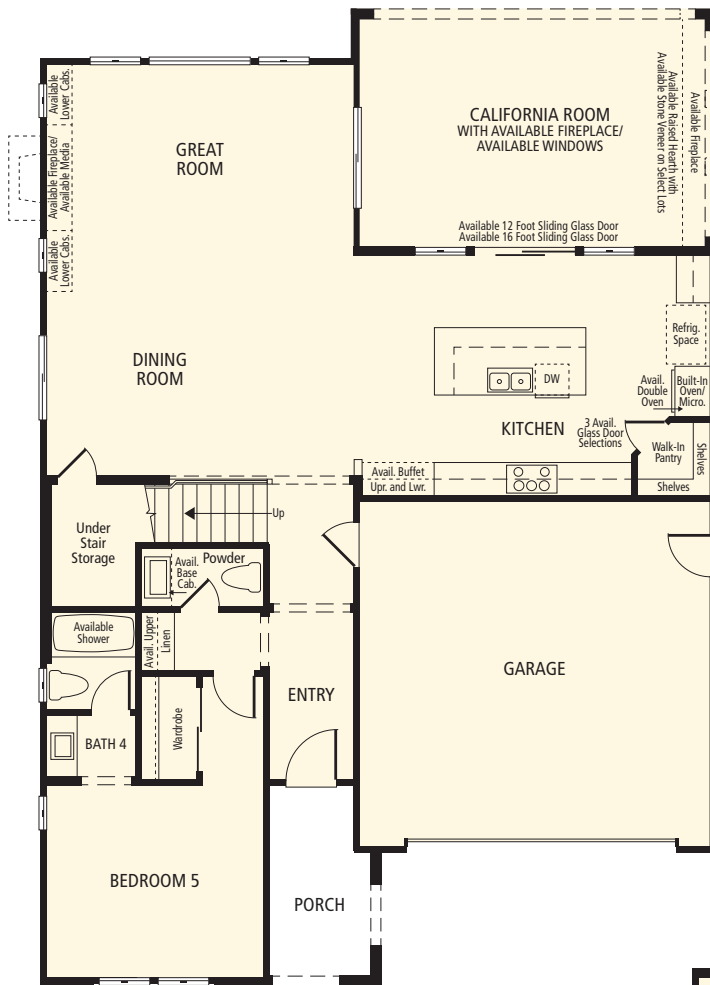


2C ANDALUSIAN (MODEL)

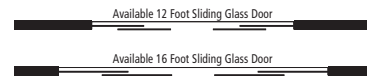


Renderings are artist's conception. \*Square footages are approximate, based on exterior area and vary by elevation.

## FIRST FLOOR



### AVAILABLE 12' OR 16' SLIDING GLASS DOOR AT KITCHEN



## SECOND FLOOR



----Denotes available item in most instances. Windows, wall sizes and locations may vary per elevation and options selected. In the interest of continuing improvement, Van Daele Homes reserves the right to make modifications to floorplans and exterior elevations without notice or obligation. All artwork, renderings and floorplans are artist's conceptions and are not to scale. See Sales Counselors for details.





## RESIDENCE

# 3

### INTERIOR LIVING SPACE

Approximately 3,225 Sq. Ft.\*

### OUTDOOR LIVING SPACE

263 Sq. Ft.\*

Two-Story

5 Bedrooms

4½ Baths

California Room

Great Room

Nook

Dining Room

Bonus Room

Two-Car Garage

### AVAILABLE

Fireplace at California Room

Guest Suite with Separate Entrance,  
Bedroom, Living Room and Kitchenette  
in lieu of Dining Room and Bedroom 5

12' or 16' Sliding Glass Door  
at Great Room

Imagination Room with Openings  
in lieu of Dining Room

3A SANTA BARBARA



3B SPANISH (MODEL)



3C ANDALUSIAN



Renderings are artist's conception. \*Square footages are approximate, based on exterior area and vary by elevation.



**FIRST FLOOR**

**GARAGE**

**ENTRY**

**KITCHEN**

**NOOK**

**GREAT ROOM**

**DINING ROOM/AVAIL. IMAGINATION ROOM W/OPENINGS/AVAIL. GUEST SUITE**

**BEDROOM 5/AVAIL. GUEST SUITE**

**BATH 4**

**POWDER**

**PORCH**

**Available Features:**

- Available fireplace
- Available raised hearth with available stone veneer on select tins
- Available 12 Foot Sliding Glass Door
- Available 16 Foot Sliding Glass Door
- Available French Doors
- Available base cabinet
- Available shower
- Available lower cabinets
- Available full width lower cabinets
- Available 3 Avail. Glass Door Selections
- Available Double Oven
- Built-In Oven/Micro
- Refrig. Space
- Walk-In Pantry
- Shelves
- Under Stair Storage
- Up
- 6 Foot Sliding Glass Door

Available 12 Foot Sliding Glass Door

Available 16 Foot Sliding Glass Door

Available Shutters

IMAGINATION  
ROOM W/OPENINGS

This floor plan illustrates a 4-bedroom residence with a bonus room, a master bedroom suite, and three full bathrooms. The layout includes a central hallway, a linen closet, and a low wall separating the bonus room from the bedrooms. The master bedroom suite features a walk-in closet and an available door. The laundry room is equipped with a sink, cabinets, and a dryer. The bonus room is adjacent to the laundry room and the master bedroom suite. The three bedrooms are each furnished with a wardrobe. The three full bathrooms are located near the bedrooms and the bonus room. The overall design is functional and spacious, suitable for a family of four or more.

**MASTER BEDROOM SUITE**

Walk-In Closet

Avail. Door

Linen Avail. Upper

MASTER BATH

Seat

Avail. Sink & Cabinets

Wash Space

DRY Space

LAUNDRY ROOM

Down

Linen

Low Wall

Wardrobe

BEDROOM 2

Wardrobe

BEDROOM 3

Wardrobe

BONUS ROOM

BATH 2

Wardrobe

BEDROOM 4

BATH 3

**AVAILABLE GUEST SUITE**

**LIVING ROOM**

**Kitchenette with Refrig. and Sink**

**Mini Refrig.**

**French Door**

**Powder**

**Base Cab.**

**Linen**

**Bath 4**

**Stacked W/D**

**Waste Disposal**

---Denotes available item in most instances. Windows, wall sizes and locations may vary per elevation and options selected. In the interest of continuing improvement, Van Daele Homes reserves the right to make modifications to floorplans and exterior elevations without notice or obligation. All artwork, renderings and floorplans are artist's conceptions and are not to scale. See Sales Counselors for details.



# FEATURES & AMENITIES

## **AUTHENTIC EXTERIOR CHARM**

Inspired architectural designs include Spanish, Santa Barbara and Andalusian elevations

Brick, stone, wood and exterior accents

Covered front porches (per plan and elevation)

Architecturally designed, color-coordinated street scenes

Decorative concrete tile roofs

Concrete driveways and walkways

Durable sectional steel roll-up garage doors with R-9 vinyl insulation and an automatic door opener

Distinctive 8' entry doors with Schlage® hardware

Gas BBQ stub in rear yard

Generous indoor/outdoor California Rooms included

## **DRAMATIC INTERIOR APPOINTMENTS**

Soaring 9' ceilings on all floors

Stunning staircases with painted wood handrails and square balusters (per plan)

All walls finished with orange peel drywall texture and rounded bullnose corners

Raised-panel Roman-style doors with upgraded brushed nickel hardware

12" x 12" ceramic tile flooring in the entry

Convenient interior laundry rooms with overhead white thermofoil cabinetry

Easy-care solid-surface countertops

Elegant white Shaker-style thermofoil cabinetry with concealed hinges

Decora® light switches

Pre-wired for Cat5 and cable

## **GOURMET KITCHENS**

Granite countertops with 6" backsplash and full backsplash at cooktop

Elegant white Shaker-style thermofoil cabinetry with concealed hinges

Whirlpool® stainless steel appliances including:

- 36" five-burner built-in cooktop
- 5.0-cu.-ft. built-in single oven and microwave
- Quiet wash dishwasher

Double-pressed stainless steel sink with Moen® pull-out faucet

Recessed LED lighting

Refrigerator area pre-plumbed for an ice maker





## THOUGHTFULLY DETAILED MASTER SUITES

Oversized walk-in closets

Elegant white Shaker-style thermofoil cabinetry  
with concealed hinges

Easy-care solid-surface countertops

Dual china sinks with Moen® faucets

Large vanity mirrors and decorator-selected lighting fixtures

Sumptuous oversized soaking tubs and spacious  
separate showers

## EFFICIENT BY DESIGN®

Van Daele Homes' Efficient By Design® is included in your new energy-efficient home because of the benefits it brings to you and the environment.

Tankless water heater

Dual-glazed low-E windows

R-13 exterior wall insulation and R-38 in attic areas  
for efficient temperature control

High-efficiency central air conditioning with set-back  
dual-zoned thermostat

Economic gas forced-air heating

ENERGY STAR® multi-cycle dishwasher

Environmentally friendly engineered lumber products

Low-VOC interior wall and ceiling paint

Solar ready

Water-efficient irrigation and drought-tolerant landscape

*Many home customization options are available through the Design Center; please refer to floorplan descriptions and illustrations. Please see your Sales Counselors for more details.*

# OUR STORY, OUR PROMISE UNLIKE ANY OTHER

Home is where memories are created, lives shared and moments celebrated, and where the honor of crafting your home is something we value and don't take for granted. At Van Daele Homes, our experienced team of employees, artisans and consultants take building quality, handcrafted homes very seriously, and we are intimately involved in your home's design and construction every step of the way.

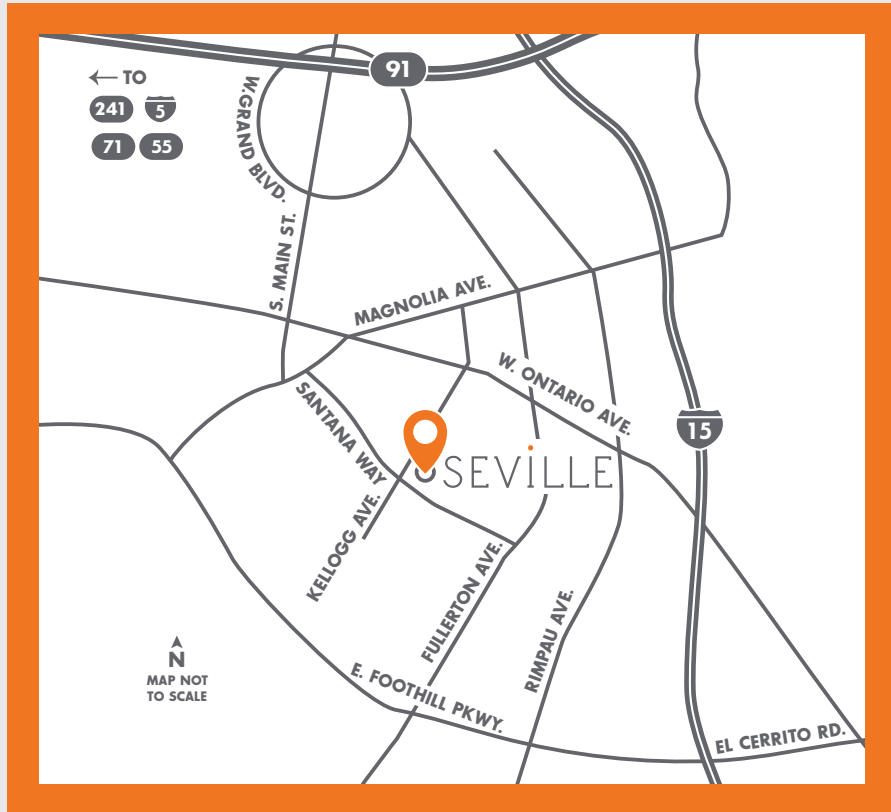
At Van Daele Homes, we don't just build homes, we build relationships. Building homes for us isn't pulling a design off the shelf and assuming it works for you and your family - it's designing and constructing homes with heart, with a meticulous attention to detail, and with the personal care and touches you and today's homebuyers need and deserve. We also offer you a high level of customization and participation in the construction process so we can help build you a home that works with the way you live, not the way we think you want to live.

We are certain you will find our homebuyer experience unparalleled - from the moment we meet until many years beyond your move-in, our Van Daele Homes team is by your side - communicating, updating and educating you on the home buying, construction and home warranty processes.

We promise you'll feel the Van Daele difference.  
It's a feeling of comfort - like coming home.

Sincerely,  
**THE VAN DAELE FAMILY**





3024 Via Segovia  
(Kellogg Ave. & Santana Way)

Corona, CA 92881

(951) 376-1590

**VANDAELE.COM**



Van Daele, Van Daele Homes, "One Family. One Promise." and "You'll Feel Good About Your New Home." are registered trademarks of Van Daele Development. Square footages are based on an approximate dimension of the exterior of the home. Models used do not reflect any racial preference. CalBRE license #00974168. 