



PEPPER TREE



# A CONNECTED LIFESTYLE



Living at Pepper Tree in the heart of Fremont offers residents an active lifestyle with its convenient location and low maintenance. Centered around a beautiful pepper tree, this charming enclave of just 26 townhomes is designed with an inviting courtyard style setting, making it easy to get to know your neighbors. Whether you're at home or out and about, Pepper Tree is designed for connected living.





# WITH A LINK TO A THRIVING CITY

Located in the thriving city of Fremont, Pepper Tree offers residents an abundance of nearby outdoor recreational activities. Take a walk in the 450-acre Central Park with your dog, or rent a paddle boat on Lake Elizabeth. Visit Quarry Lakes Regional Recreation Area or Ardenwood Historic Farm, all within just minutes of Pepper Tree. Major shopping malls, dining and entertainment venues are all just a short distance away, and for the high tech industry, commuting to Silicon Valley and major employment centers is a breeze with BART, Amtrak and major freeways nearby. Top-notch schools also make Fremont one of the most sought-after places to live in the East Bay.



# WHY VAN DAELE?

---

Van Daele Homes is a family-owned company that builds for YOUR street, not Wall Street. Unlike most others, we are not a publicly-owned conglomerate answering to stockholders.

YOU are our stockholder. We answer to YOU. This is just one of the many reasons the Building Industry Association of Southern California honored us as BUILDER OF THE YEAR.

## OUR FOUR POINT PLEDGE TO YOU

---

### OUR SALES PHILOSOPHY

Van Daele Sales Counselors are seasoned professionals who are committed to looking out for your best interests, will answer all your questions, assist you with all your needs and make sure you'll feel good about your new home.

### YOUR LOAN

We include the services of loanDepot as our "preferred lender" because of the proven service and value they bring to our homebuyers. It's no wonder that loanDepot has received the distinguished "Eliant Certified" customer satisfaction designation.

### YOU'RE INCLUDED

We involve you in your home buying process via regular construction updates along with private 'hard-hat' tours of your new home which includes additional walk through's prior to your home's completion.

### VAN DAELE VALUE

We offer the best there is in location, design, quality, features, customer satisfaction and price. Generations of smart home shoppers and even our friendly competitors know and respect Van Daele.







## OUR STORY

---

Home is where memories are created, lives shared and moments celebrated, and where the honor of crafting your home is something we value and don't take for granted. At Van Daele Homes, our experienced team of employees, artisans and consultants take building quality, handcrafted homes very seriously, and we are intimately involved in your home's design and construction every step of the way.

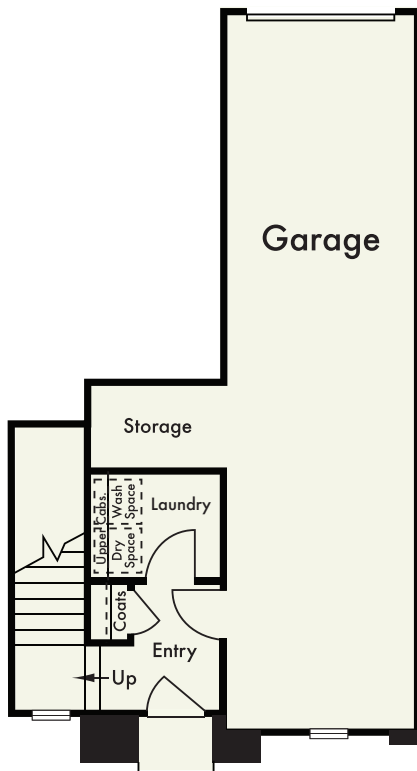
At Van Daele Homes, we don't just build homes, we build relationships. Building homes for us isn't pulling a design off the shelf and assuming it works for you and your family – it's designing and constructing homes with heart, with a meticulous attention to detail, and with the personal care and touches you and today's homebuyers need and deserve. We also offer you a high level of customization and participation in the construction process so we can help build you a home that works with the way you live, not the way we think you want to live.

We are certain you will find our homebuyer experience unparalleled – from the moment we meet until many years beyond your move-in, our Van Daele Homes team is by your side – communicating, updating and educating you on the home buying, construction and home warranty processes.

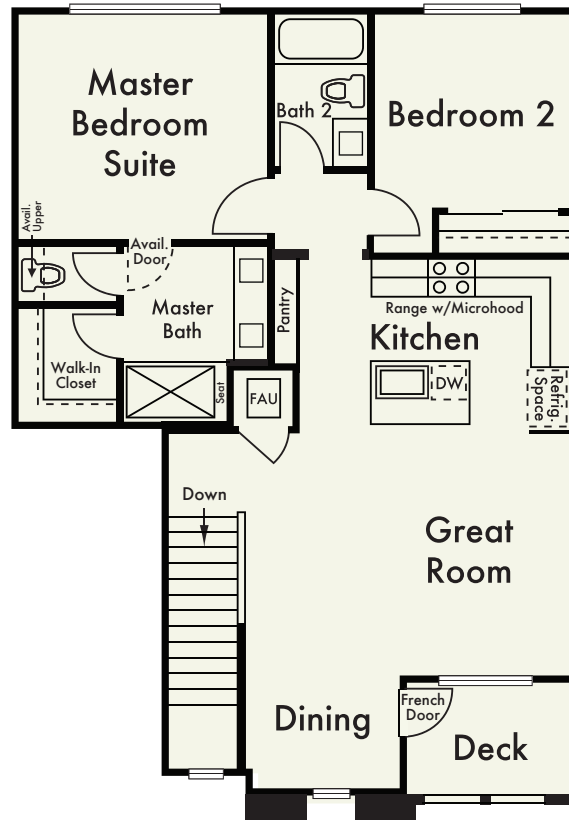
We promise you'll feel the Van Daele difference. It's a feeling of comfort – like coming home.

Welcome to the family of Van Daele Homes.

# RESIDENCE 1



First Floor



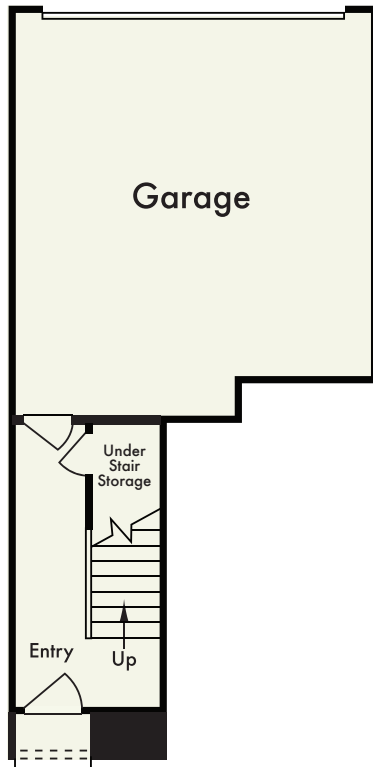
Second Floor

CARRIAGE STYLE TOWNHOME/SINGLE LEVEL LIVING  
Interior Living Space Approximately 1,161 Sq. Ft.\*

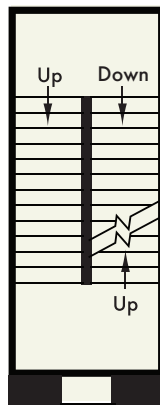
- Two Bedrooms
- Two Baths
- Great Room
- Dining Area
- Second Floor Deck
- Two-Car Tandem Garage with Storage

--- Denotes available item in most instances. Windows, wall sizes and locations may vary per elevation. In the interest of continuing improvement, Van Daele Homes reserves the right to make modifications to floorplans and exterior elevations without notice or obligation. \*Square footages are exterior, approximate and vary by elevation. All artwork, renderings and floorplans are artist's conception and are not to scale. See Sales Counselors for details.

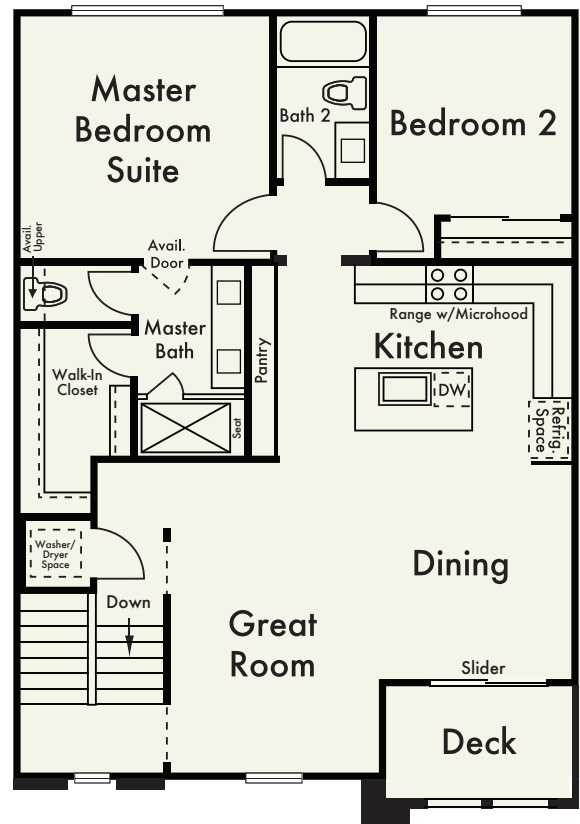
# RESIDENCE 2



First Floor



Second Floor



Third Floor

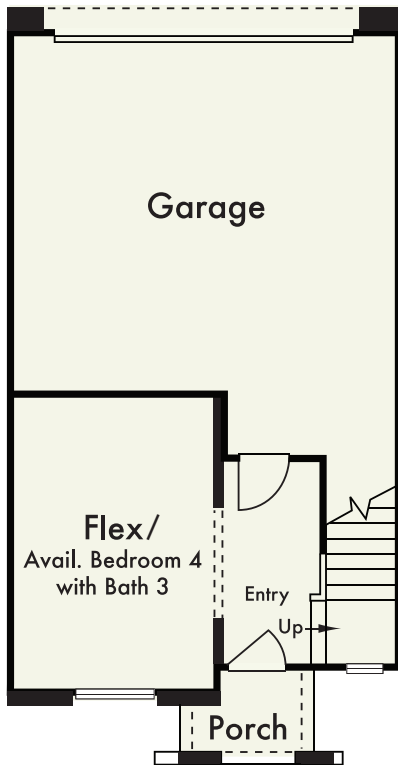
## CARRIAGE STYLE TOWNHOME/SINGLE LEVEL LIVING

Interior Living Space Approximately 1,395 Sq. Ft.\*

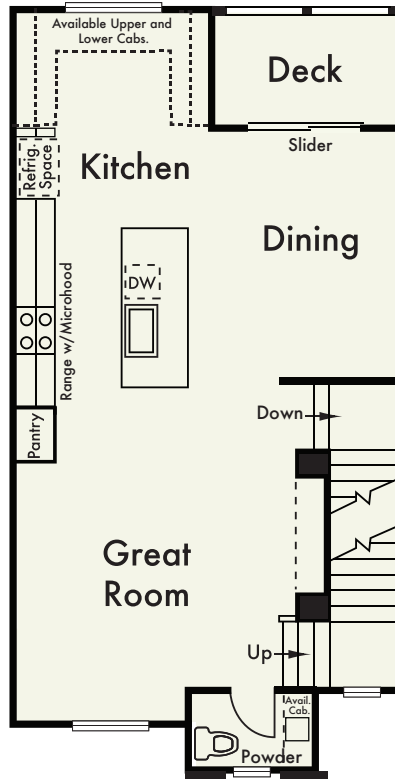
- Two Bedrooms
- Two Baths
- Great Room
- Dining Area
- Third Floor Deck
- Two-Car Garage

--- Denotes available item in most instances. Windows, wall sizes and locations may vary per elevation. In the interest of continuing improvement, Van Daele Homes reserves the right to make modifications to floorplans and exterior elevations without notice or obligation. \*Square footages are exterior, approximate and vary by elevation. All artwork, renderings and floorplans are artist's conception and are not to scale. See Sales Counselors for details.

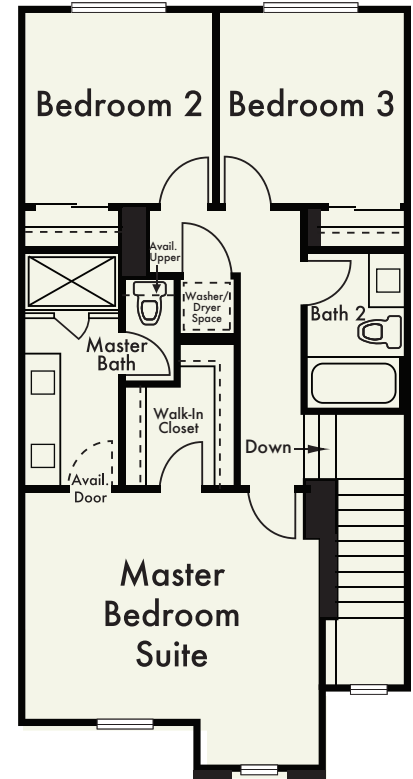
# RESIDENCE 3



First Floor



Second Floor



Third Floor



\* Only Available on Accessible Units

## THREE-STORY TOWNHOME

Interior Living Space Approximately 1,791 Sq. Ft.\*

- Three Bedrooms plus Flex Space
- Two and One-Half Baths
- Great Room
- Dining Area
- Second Floor Deck
- Two-Car Garage

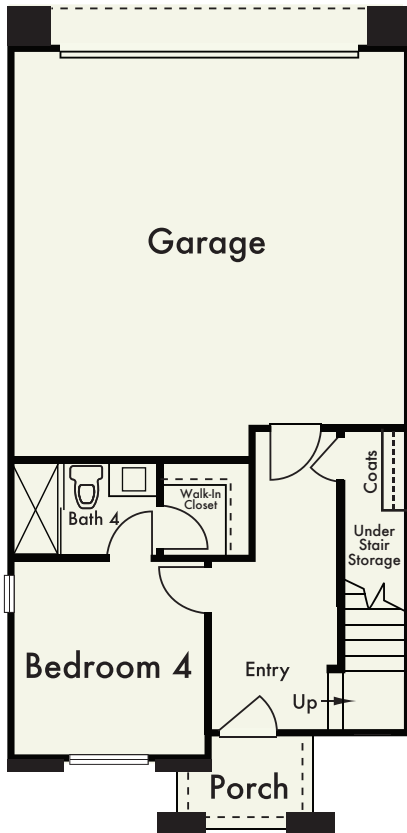
### Available

- Available Bedroom 4/Bath 3 in lieu of First Floor Flex Space

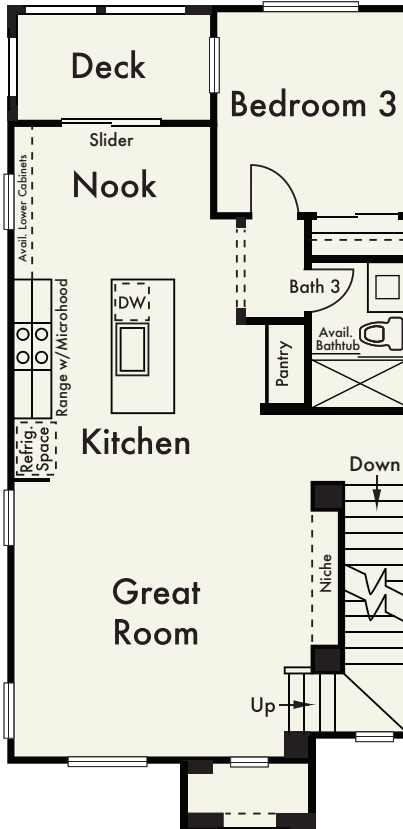
--- Denotes available item in most instances. Windows, wall sizes and locations may vary per elevation. In the interest of continuing improvement, Van Daele Homes reserves the right to make modifications to floorplans and exterior elevations without notice or obligation. \*Square footages are exterior, approximate and vary by elevation. All artwork, renderings and floorplans are artist's conception and are not to scale. See Sales Counselors for details.



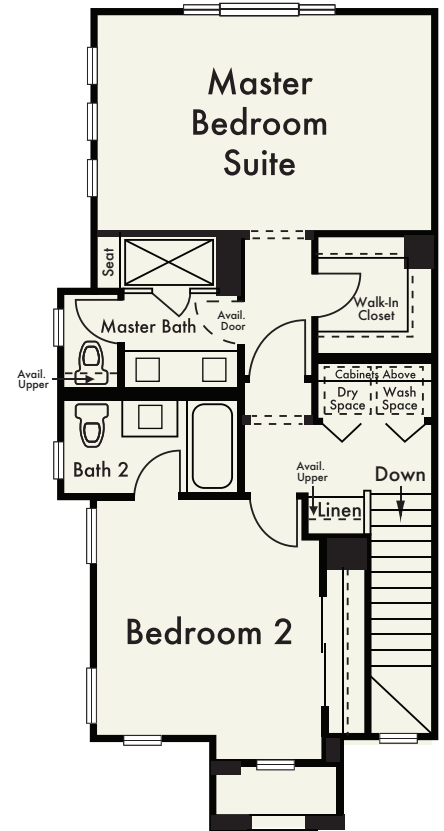
# RESIDENCE 4



First Floor



Second Floor



Third Floor

## THREE-STORY TOWNHOME

Interior Living Space Approximately 1,845 Sq. Ft.\*

- Four Bedrooms
- Four Baths
- Great Room
- Nook
- Second Floor Deck
- Two-Car Garage

--- Denotes available item in most instances. Windows, wall sizes and locations may vary per elevation. In the interest of continuing improvement, Van Daele Homes reserves the right to make modifications to floorplans and exterior elevations without notice or obligation. \*Square footages are exterior, approximate and vary by elevation. All artwork, renderings and floorplans are artist's conception and are not to scale. See Sales Counselors for details.

# AMENITIES

## AUTHENTIC EXTERIOR CHARM AND LONG-LASTING QUALITY

- Inspired Mediterranean style building elevations
- Extensive use of wood accents and wrought iron
- Covered front porches (per plan and elevation)
- Architecturally designed, color coordinated street scenes
- Decorative concrete tile roofs
- Attractive carriage style garage doors with an automatic door opener
- Distinctive 6'8" foot entry doors with Kwikset Venetian Bronze hardware

## DRAMATIC INTERIOR APPOINTMENTS

- Soaring 9 foot high ceilings on all floors
- Stunning staircases (per plan) with painted wood handrails and balusters
- Elegant 5 1/4" baseboards
- All walls finished with light drywall texture and rounded bullnose corners
- Raised panel Corvado style interior doors with chrome hardware
- 12" x 12" Ceramic tile flooring in the Entry, Kitchen and all Baths
- Convenient interior laundry rooms with included upper cabinetry (per plan)
- Elegant shaker style Beech cabinetry with concealed hinges (choice of three stained finishes)
- Easy-care solid surface countertops
- Decora light switches
- Pre-wired for Cat 5 and cable at Great Room, Master Bedroom, and All Secondary Bedrooms
- Flat Panel Connect Conduit for Flat Screen Television at Great Room

## ADVANCED HOME TECHNOLOGY

- Home Automation System
- Security System Pre-Wire
- Smart Thermostat
- Premier Doorbell Camera/Intercom with Door/Window Alarm Sensors and Motion Detector

## GOURMET KITCHENS

- Granite countertops with six inch backsplash
- Elegant shaker style Beech cabinetry with concealed hinges (choice of three stained finishes)
- Whirlpool® stainless steel appliance package including:
  - Freestanding range with a self-cleaning oven
  - Energy Star® quiet wash dishwasher
  - Microwave Oven/Hood Combo
- Large single bowl stainless steel sink with Pfister® pull-out faucet
- Recessed lighting
- Refrigerator area pre-plumbed for an icemaker
- Under cabinet lighting (per plan)

# AMENITIES

## THOUGHTFULLY DETAILED OVERSIZED MASTER SUITES

- Generous walk-in closets
- Elegant shaker style Beech cabinetry with concealed hinges (choice of three stained finishes)
- Easy-care solid surface counter tops and shower surrounds
- Dual china sinks with Delta® faucets
- Large vanity mirrors

## EFFICIENT BY DESIGN

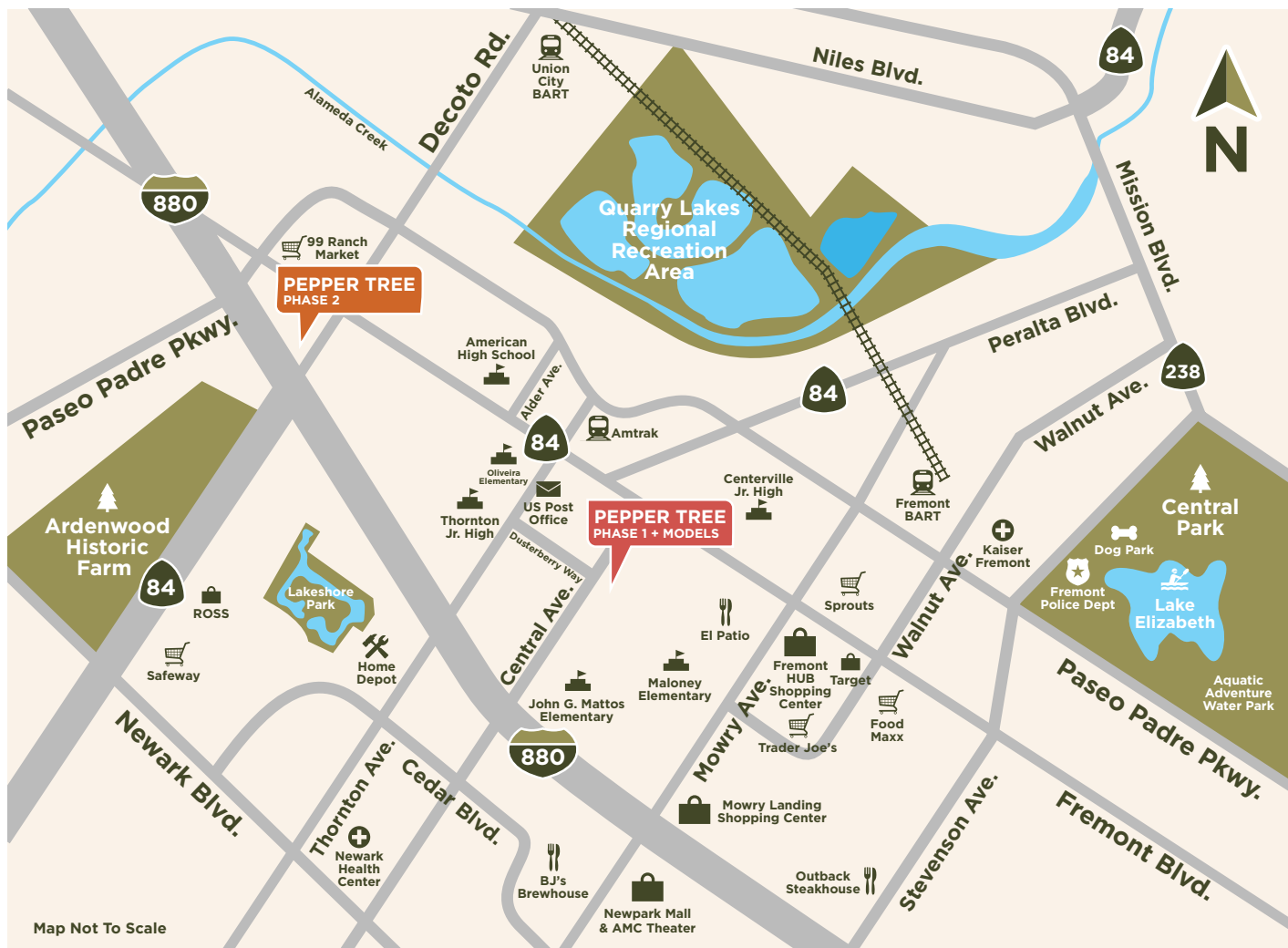
Van Daele Homes' Efficient By Design™ is included in your new energy efficient home because of the benefits it brings to the you and the environment.

- Tankless water heater
- Ventilation fan for improved indoor air quality
- Dual glazed Low-E glass windows
- R-13 exterior wall insulation at 2×4 walls, R-19 at 2×6 walls and R-38 in attic areas
- for efficient temperature control
- High efficiency central air conditioning with night set back thermostat
- Economic gas forced air heating
- ENERGY STAR™ multi-cycle dishwasher
- Environmentally friendly engineered lumber products
- Low VOC interior wall and ceiling paint
- Ultra water conserving commodes

Rendering is artist's conception and is not to scale. Many customization options are available; please refer to floorplan descriptions and illustrations. Upgrades and options are available through the design center for a variety of finishes, appliances, kitchen countertops, cabinetry and staircase, security and audio/video, fireplace surround, lighting, plumbing, and electrical items. Please see your Sales Counselors for more details.







# PEPPER TREE

4192 Central Avenue  
Fremont, California 94536  
(510) 509-2945  
vandaele.com

Square footages are based on an approximate dimension of the exterior of the home. Models used do not reflect any racial preference. CalBRE #01932978 🏠